

5 SPECIFICATIONS

- Voltage Rating : 50V AC/DC
- Current Rating : 0.5A AC/DC
- Withstanding Voltage : 200V AC/minute
- Insulation Resistance : 500M Ω min.
- Temperature Range : - 40°C to + 85°C
- Contact Resistance : 40m Ω max.

5 FPC CONNECTOR

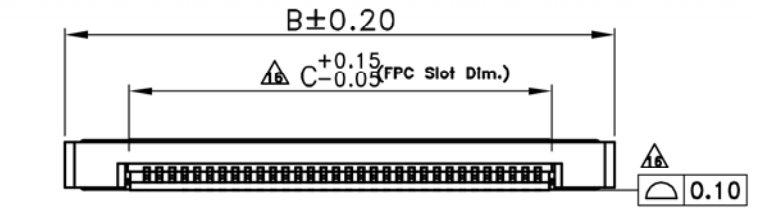
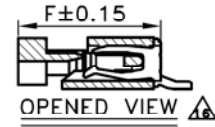
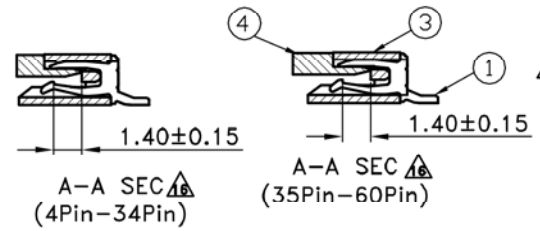
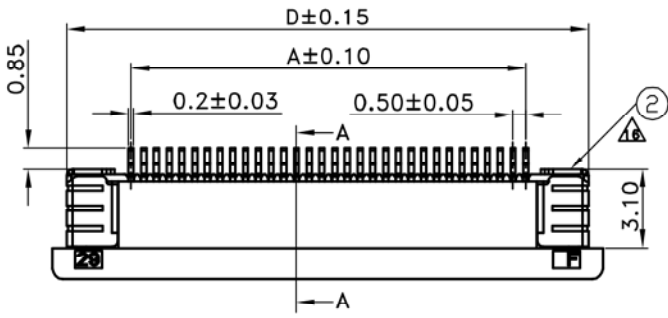
- Part No. : JS-1191D-XX XX XX XX(Nail Close Type)
- ① ② ③ ④

- ① Poles : 04~60
- ② Contact Plated : Blank : Mat-Tin Plated (G) : Gold Flash
- ③ Halogen : Blank:Normal NH : Halogen Free
- ④ Packing : Blank : Tape&Reel /A : Tube

• Material :

- 1.Contact : Phosphor Bronze ; Plated : Refer The Above Options
- 2.Solder Nail : Brass ; Mat-Tin Plated
- 3.Base : LCP , Color: Nature
- 4.Actuator : LCP ,Color: Black

- Q'ty : 2,000pcs/Reel



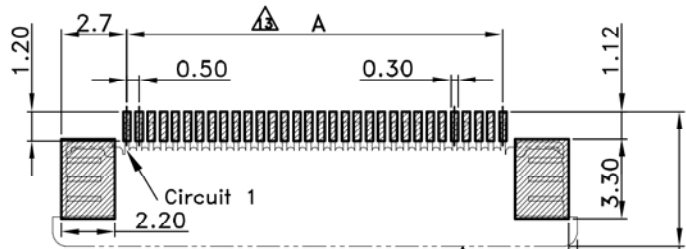
Poles	Dimensions(mm)						Poles	Dimensions(mm)						Poles	Dimensions(mm)						
	A	B	C	D	E	F		A	B	C	D	E	F		A	B	C	D	E	F	
04	1.50	7.60	2.60	6.50			24	11.50	17.60	12.60	16.50			44	21.50	27.60	22.60	26.50			
05	2.00	8.10	3.10	7.00			25	12.00	18.10	13.10	17.00			45	22.00	28.10	23.10	27.00			
06	2.50	8.60	3.60	7.50			26	12.50	18.60	13.60	17.50			46	22.50	28.60	23.60	27.50			
07	3.00	9.10	4.10	8.00			27	13.00	19.10	14.10	18.00			47	23.00	29.10	24.10	28.00			
08	3.50	9.60	4.60	8.50			28	13.50	19.60	14.60	18.50			48	23.50	29.60	24.60	28.50			
09	4.00	10.10	5.10	9.00			29	14.00	20.10	15.10	19.00	4.35	5.60	49	24.00	30.10	25.10	29.00			
10	4.50	10.60	5.60	9.50			30	14.50	20.60	15.60	19.50			50	24.50	30.60	25.60	29.50			
11	5.00	11.10	6.10	10.00			31	15.00	21.10	16.10	20.00			51	25.00	31.10	26.10	30.00			
12	5.50	11.60	6.60	10.50			32	15.50	21.60	16.60	20.50			52	25.50	31.60	26.60	30.50			
13	6.00	12.10	7.10	11.00	4.35	5.60	33	16.00	22.10	17.10	21.00			53	26.00	32.10	27.10	31.00			
14	6.50	12.60	7.60	11.50			34	16.50	22.60	17.60	21.50			54	26.50	32.60	27.60	31.50	4.90	6.15	
15	7.00	13.10	8.10	12.00			35	17.00	23.10	18.10	22.00			55	27.00	33.10	28.10	32.00			
16	7.50	13.60	8.60	12.50			36	17.50	23.60	18.60	22.50			56	27.50	33.60	28.60	32.50			
17	8.00	14.10	9.10	13.00			37	18.00	24.10	19.10	23.00			57	28.00	34.10	29.10	33.00			
18	8.50	14.60	9.60	13.50			38	18.50	24.60	19.60	23.50			58	28.50	34.60	29.60	33.50			
19	9.00	15.10	10.10	14.00			39	19.00	25.10	20.10	24.00	4.90	6.15	59	29.00	35.10	30.10	34.00			
20	9.50	15.60	10.60	14.50			40	19.50	25.60	20.60	24.50			60	29.50	35.60	30.60	34.50			
21	10.00	16.10	11.10	15.00			41	20.00	26.10	21.10	25.00										
22	10.50	16.60	11.60	15.50			42	20.50	26.60	21.60	25.50										
23	11.00	17.10	12.10	16.00			43	21.00	27.10	22.10	26.00										

CHYAO SHIUNN ELECTRONIC INDUSTRIAL LTD.

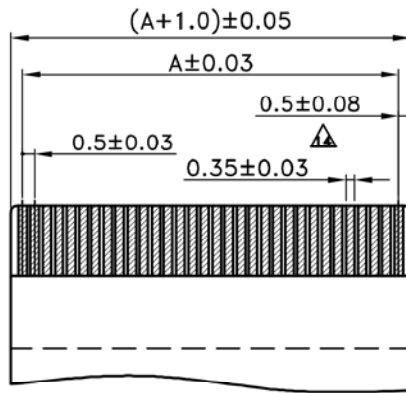
PART NO JS-1191D-XX

0.50mm SMT Series ZIF FPC/FFC Connector

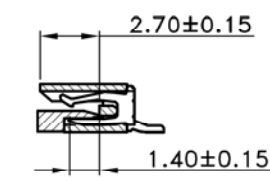
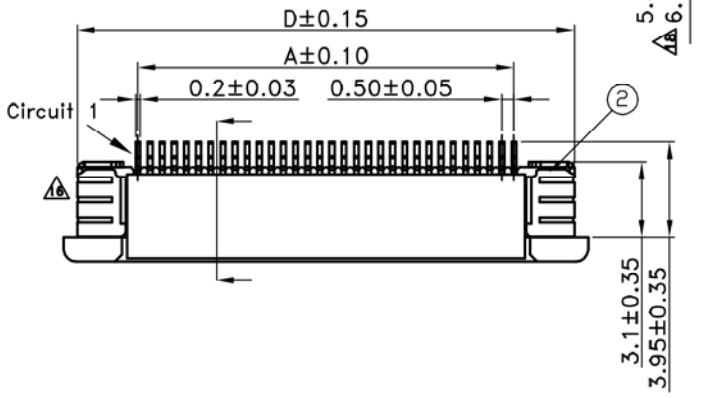
APPROVED BY	SCALE	UNIT	TOLERANCE	LTR	REVISION RECORD	NAME	DATE	LTR	REVISION RECORD	NAME	DATE
Tom Shih		mm	.0 ±0.30	△	尺寸修改	劉怡萱	10/12/24	△	物性表新增卷裝數量	Tom Lee	18/06/27
CHECKED BY	PROJ	VER NO.	.00 ±0.20	△	客戶增加尺寸	劉怡萱	11/01/06	△			
Erin Chou		a18	.000 ±0.10	△	尺寸標注錯誤	劉怡萱	11/04/15	△			
DRAWN BY	DATE	SIZE	ANGLE		修改PAD尺寸及物性表	林謙豪	12/04/30	CUSTOMER			
Tom Lee	2018/06/27	A4	0° ±1°	△	修改軟排尺寸	林謙豪	12/05/24				
			0° ±	△	增加電鍍包裝NH選項,接地片外觀修正	吳弘文	13/12/25				
			SHEET 1/1	△	溫度下限修定	吳弘文	15/08/31	Conforms to The RoHS Instruction			



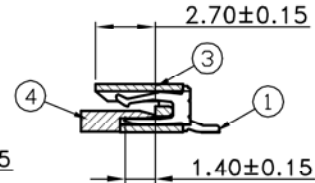
RECOMMENDED PCB LAYOUT
General Tolerance ±0.05



RECOMMENDED FPC/FFC DIM.



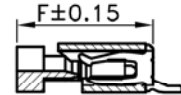
A-A SEC
(4Pin-34Pin)



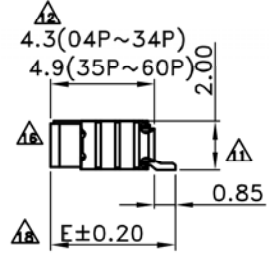
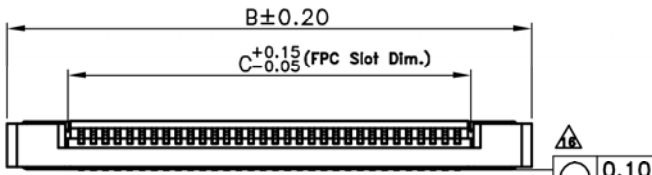
A-A SEC
(35Pin-60Pin)

- SPECIFICATIONS
 - Voltage Rating : 50V AC/DC
 - Current Rating : 0.5A AC/DC
 - Withstanding Voltage : 200V AC/minute
 - Insulation Resistance : 500M Ω min.
 - Temperature Range : - 40°C to + 85°C
 - Contact Resistance : 40m Ω max.
- FPC CONNECTOR
 - Part No. : JS-1191U-XX XX XX XX(Nail Close Type)
 - ① ② ③ ④

- ① Poles : 04~60
- ② Contact Plated : Blank : Mat-Tin Plated
(G) : Gold Flash
- ③ Halogen : Blank:Normal
NH : Halogen Free
- ④ Packing : Blank : Tape&Reel
/A : Tube
- Material :
 - △ 1.Contact : Phosphor Bronze ; Plated : Refer The Above Options
 - 2.Solder Nail : Brass ; Mat-Tin Plated
 - △ 3.Base : LCP UL94V-0 , Color: Nature
 - △ 4.Actuator : LCP UL94V-0 ,Color: Black
 - △ Q'ty : 2,000pcs/Reel



OPENED VIEW

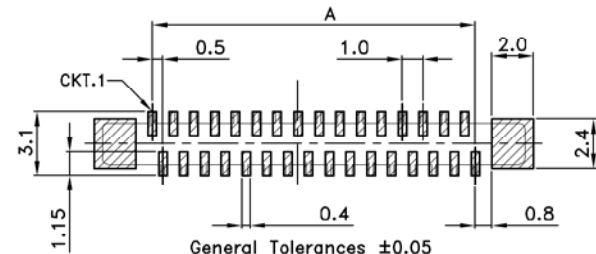


Poles	Dimensions(mm)						Poles	Dimensions(mm)						Poles	Dimensions(mm)					
	A	B	C	D	E	F		A	B	C	D	E	F		A	B	C	D	E	F
04	1.50	7.60	2.60	6.50			24	11.50	17.60	12.60	16.50		44	21.50	27.60	22.60	26.50			
05	2.00	8.10	3.10	7.00			25	12.00	18.10	13.10	17.00		45	22.00	28.10	23.10	27.00			
06	2.50	8.60	3.60	7.50			26	12.50	18.60	13.60	17.50		46	22.50	28.60	23.60	27.50			
07	3.00	9.10	4.10	8.00			27	13.00	19.10	14.10	18.00		47	23.00	29.10	24.10	28.00			
08	3.50	9.60	4.60	8.50			28	13.50	19.60	14.60	18.50		48	23.50	29.60	24.60	28.50			
09	4.00	10.10	5.10	9.00			29	14.00	20.10	15.10	19.00	5.15	5.80	49	24.00	30.10	25.10	29.00		
10	4.50	10.60	5.60	9.50			30	14.50	20.60	15.60	19.50		50	24.50	30.60	25.60	29.50			
11	5.00	11.10	6.10	10.00			31	15.00	21.10	16.10	20.00		51	25.00	31.10	26.10	30.00			
12	5.50	11.60	6.60	10.50			32	15.50	21.60	16.60	20.50		52	25.50	31.60	26.60	30.50			
13	6.00	12.10	7.10	11.00			33	16.00	22.10	17.10	21.00		53	26.00	32.10	27.10	31.00			
14	6.50	12.60	7.60	11.50	5.15	5.80	34	16.50	22.60	17.60	21.50		54	26.50	32.60	27.60	31.50	5.75	6.15	
15	7.00	13.10	8.10	12.00			35	17.00	23.10	18.10	22.00		55	27.00	33.10	28.10	32.00			
16	7.50	13.60	8.60	12.50			36	17.50	23.60	18.60	22.50		56	27.50	33.60	28.60	32.50			
17	8.00	14.10	9.10	13.00			37	18.00	24.10	19.10	23.00		57	28.00	34.10	29.10	33.00			
18	8.50	14.60	9.60	13.50			38	18.50	24.60	19.60	23.50		58	28.50	34.60	29.60	33.50			
19	9.00	15.10	10.10	14.00			39	19.00	25.10	20.10	24.00	5.75	6.15	59	29.00	35.10	30.10	34.00		
20	9.50	15.60	10.60	14.50			40	19.50	25.60	20.60	24.50		60	29.50	35.60	30.60	34.50			
21	10.00	16.10	11.10	15.00			41	20.00	26.10	21.10	25.00									
22	10.50	16.60	11.60	15.50			42	20.50	26.60	21.60	25.50									
23	11.00	17.10	12.10	16.00			43	21.00	27.10	22.10	26.00									

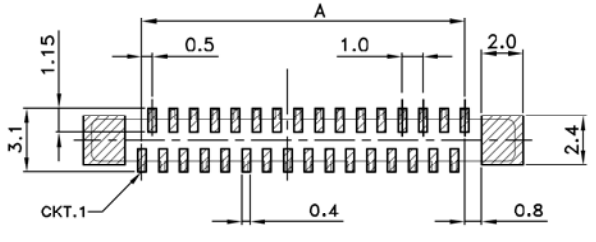
喬訊電子工業股份有限公司
CHYAO SHIUNN
ELECTRONIC INDUSTRIAL LTD.

PART NO JS-1191U-XX
0.50mm SMT Series ZIF FPC/FFC Connector

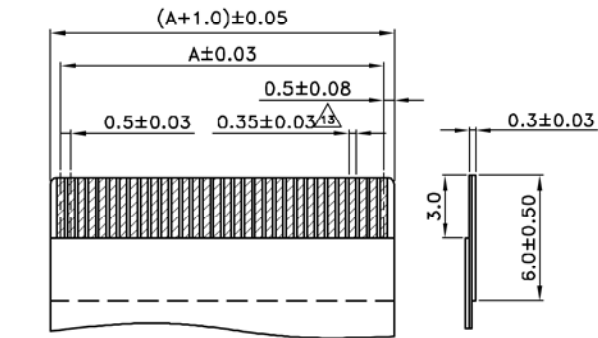
APPROVED BY	SCALE	UNIT	TOLERANCE	LTR	REVISION RECORD	NAME	DATE	LTR	REVISION RECORD	NAME	DATE
Tom Shih		mm	.0 ±0.30	△	尺寸標注錯誤	劉怡萱	11/04/15	△	溫度下限修定	吳弘文	15/08/31
CHECKED BY	PROJ	VER NO.	.00 ±0.20	△	PAD尺寸及物性表修改	林謙豪	12/04/30	△	物性表加註塑膠防火等級	Tom Lee	17/09/04
Erin Chou		a21	.000 ±0.10	△	修改軟排尺寸	林謙豪	12/05/24	△	物性表增加裝卷數量	Tom Lee	18/06/27
DRAWN BY	DATE	SIZE	ANGLE	△	C值標示不明, 增加說明	張逸維	12/10/03		CUSTOMER	Conforms to The RoHS Instruction	
Tom Lee	2018/06/27	A4	0° ±1°	△	產品外觀修正	吳弘文	13/08/23				
			0° ±	△	增加電鍍包裝 NH選項	吳弘文	13/12/25				
			SHEET 1/1	△	增加layout 產品位置標示	吳弘文	14/03/14				



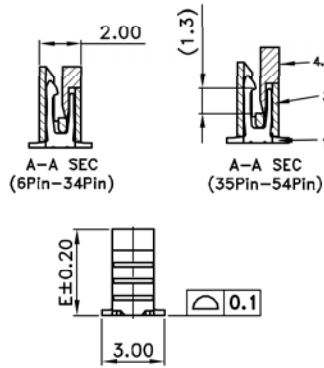
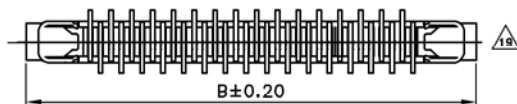
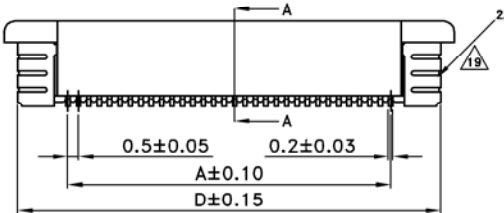
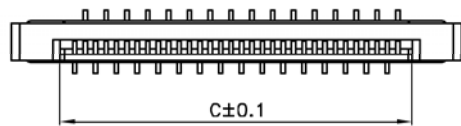
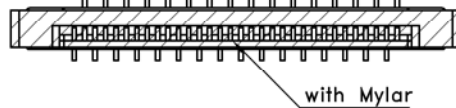
General Tolerances ± 0.05
RECOMMENDED PCB LAYOUT
Special Layout



General Tolerances ± 0.05
RECOMMENDED PCB LAYOUT
Standard Layout



RECOMMENDED FPC/FFC DIM.



SPECIFICATIONS

- △₁₅ • Current Rating : 0.5A AC/DC
- Withstanding Voltage : 200V AC/minute
- Insulation Resistance : 500M Ω min.
- △₁₆ • Temperature Range : - 40°C to + 85°C
- △₂₂ • Contact Resistance : 40m Ω max.

FPC CONNECTOR

- △₁₇ • Part No. : JS-1191VX-XX(X)X/X

① Blank : Standard Layout
R : Special Layout

△₂₁ ② Poles : 04~54

△₂₃ ③ Plated: Blank: Tin plated
G: Gold plated

④ Blank : Without Mylar

△₁₇ M : With Mylar

⑤ Packing : Blank : Tape&Reel

△₂₃ /A : Tube

Material :

- 1.Contact : Phosphor Bronze ; Matte-tin Plated
- 2.Nail : Brass ; Matte-tin Plated
- 3.Housing : LCP , Color: Nature
- 4.Cover : LCP , Color: Black

△₁₄△₂₄ • Q' ty : 1,500 pcs./Reel

Poles	Dimensions(mm)					Poles	Dimensions(mm)					Poles	Dimensions(mm)				
	A	B	C	D	E		A	B	C	D	E		A	B	C	D	E
04	1.50	7.60	2.60	6.50	4.40	21	10.00	16.10	11.10	15.00	4.40	38	18.50	24.60	19.60	23.50	4.90
05	2.00	8.10	3.10	7.00		22	10.50	16.60	11.60	15.50		39	19.00	25.10	20.10	24.00	
06	2.50	8.60	3.60	7.50		23	11.00	17.10	12.10	16.00		40	19.50	25.60	20.60	24.50	
07	3.00	9.10	4.10	8.00		24	11.50	17.60	12.60	16.50		41	20.00	26.10	21.10	25.00	
08	3.50	9.60	4.60	8.50		25	12.00	18.10	13.10	17.00		42	20.50	26.60	21.60	25.50	
09	4.00	10.10	5.10	9.00		26	12.50	18.60	13.60	17.50		43	21.00	27.10	22.10	26.00	
10	4.50	10.60	5.60	9.50		27	13.00	19.10	14.10	18.00		44	21.50	27.60	22.60	26.50	
11	5.00	11.10	6.10	10.00		28	13.50	19.60	14.60	18.50		45	22.00	28.10	23.10	27.00	
12	5.50	11.60	6.60	10.50		29	14.00	20.10	15.10	19.00		46	22.50	28.60	23.60	27.50	
13	6.00	12.10	7.10	11.00		30	14.50	20.60	15.60	19.50		47	23.00	29.10	24.10	28.00	
14	6.50	12.60	7.60	11.50		31	15.00	21.10	16.10	20.00		48	23.50	29.60	24.60	28.50	
15	7.00	13.10	8.10	12.00		32	15.50	21.60	16.60	20.50		49	24.00	30.10	25.10	29.00	
16	7.50	13.60	8.60	12.50		33	16.00	22.10	17.10	21.00		50	24.50	30.60	25.60	29.50	
17	8.00	14.10	9.10	13.00		34	16.50	22.60	17.60	21.50		51	25.00	31.10	26.10	30.00	
18	8.50	14.60	9.60	13.50		35	17.00	23.10	18.10	22.00		52	25.50	31.60	26.60	30.50	
19	9.00	15.10	10.10	14.00		36	17.50	23.60	18.60	22.50		53	26.00	32.10	27.10	31.00	
20	9.50	15.60	10.60	14.50		37	18.00	24.10	19.10	23.00		54	26.50	32.60	27.60	31.50	



喬訊電子工業股份有限公司
CHYAO SHIUNN
ELECTRONIC INDUSTRIAL LTD.

PART NO JS-1191VX-XX(X)X

0.5mm Pitch ZIF FPC SMT Straight Type Connector

APPROVED BY	SCALE	UNIT	TOLERANCE	LTR	REVISION RECORD	NAME	DATE	LTR	REVISION RECORD	NAME	DATE
Tom Shih		mm	.0 ±0.30	△ ₁₅	修改額定電壓	張逸維	13/04/08	△ ₂₂	修改接觸阻抗	Eddie	18/10/09
CHECKED BY	PROJ	VER NO.	.00 ±0.20	△ ₁₆	加註JS-1191VX-XXM2 Poles : 04~40	吳弘文	13/05/08	△ ₂₃	新增Tube包裝選項	Eddie	19/06/12
Erin Chou		a24	.000 ±0.10	△ ₁₇	刪除M2選項, 更改M1->M	吳弘文	14/04/08	△ ₂₄	修改包裝數量	Eddie	21/03/12
DRAWN BY	DATE	SIZE	ANGLE	△ ₁₈	溫度下限修定	吳弘文	15/08/31	CUSTOMER			
Eddie	2021/03/12	A4	0° ±1°	△ ₁₉	外觀修正	吳弘文	16/02/18				
			.0° ±	△ ₂₀	新增鍍金電鍍選項	Tom Lee	17/09/08				
			SHEET 1/1	△ ₂₁	修改全尺寸表	Eddie	18/08/28	Conforms to The RoHS Instruction			