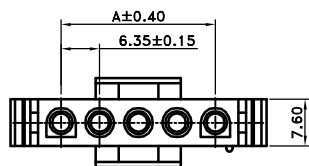
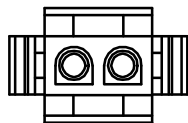


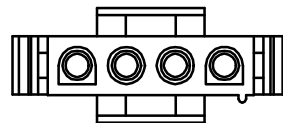
Single Row



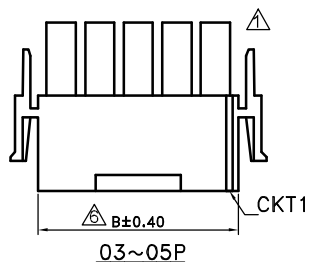
Poles	Dimensions(mm)			
	A	B	C	D
02	6.35	14.25	27.70	14.80
03	12.70	20.30	27.80	14.70
04	19.05	26.67	27.60	14.70
05	25.40	33.20	27.80	14.80



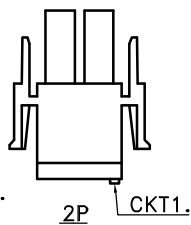
2P



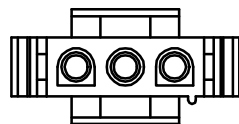
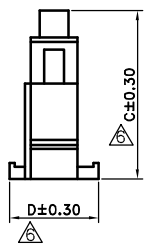
4P



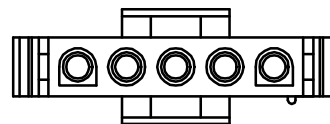
03~05P



2P



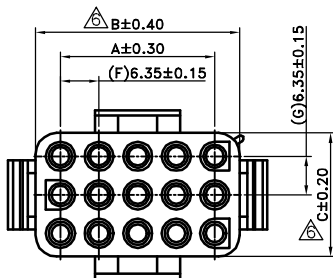
3P



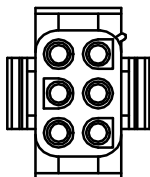
5P

PRODUCT VIEW

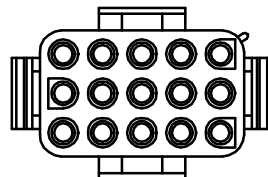
Triple Row



Poles	Dimensions(mm)				
	A	B	C	D	E
2*3	6.35	13.97	20.32	27.80	27.70
3*3	12.70	20.50	20.50	28.20	28.10
4*3	19.05	27.10	20.50	28.20	28.10
5*3	25.40	34.10	20.60	28.30	28.50

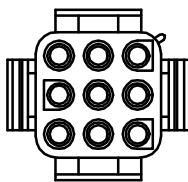
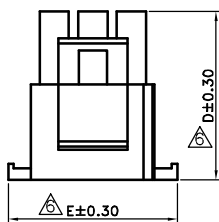
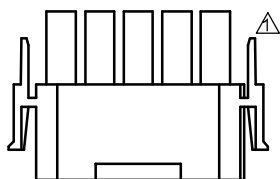


2x3P

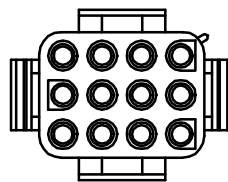


5x3P

PRODUCT VIEW



3x3P



4x3P

■ SPECIFICATIONS

- Current Rating :
 1. 2~5 Circuit : 12A Max. (With UL1015 AWG #12)
 2. 2x3~5x3 Circuit : 9A Max. (With UL1007 AWG #16)
- Withstanding Voltage : 2,900V AC/minute
- Insulation Resistance : 1,000MΩ min
- Temperature Range : -40 °C to + 105°C
- Contact Resistance : 20mΩ max

■ PLUG

- Part No. : JS-6350WX-XX(XX)

Product Code

- ① Mated Terminal Type
 - F : Mated with Female Type
 - M : Mated with Male Type
- ② Poles
 - Single-Row : 02~05
 - Triple-Row : 02x3, 03x3, 04x3, 05x3
- ③ Material
 - Blank : Nylon66 UL94V-2
 - V0 : Nylon66 UL94V-0

• Mate Part :

- Panel Mount Receptacle :
 - 6350HX Series
- Wire to Board Type Receptacle :
 - 6350WSX Series
 - 6350WRX Series

• Packing : Bag

Male Terminal (Split Type): Product No. : 6350H-TX1	Male Terminal (Solid Type): Product No. : 6350H-TX	Female Terminal: Product No. : 6350W-TX
* Only available to use in Triple-Row	* Only available to use in Single-Row	
Mated Part 1.Mated With 6350WSF 2.Mated With 6350HF	Mated Part 1.Mated With 6350WSF 2.Mated With 6350WRF 3.Mated With 6350HF	Mated Part 1.Mated With 6350WSM 2.Mated With 6350WRM 3.Mated With 6350HM



喬訊電子工業股份有限公司

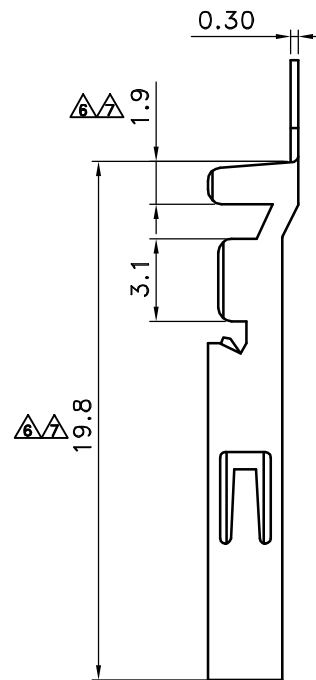
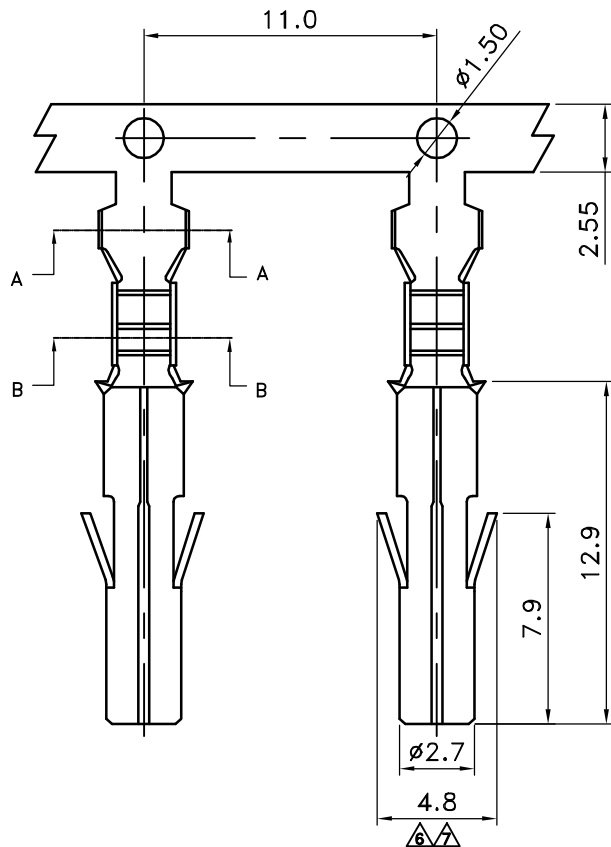
CHYAO SHIUN
ELECTRONIC INDUSTRIAL LTD.

APPROVED BY	SCALE	UNIT	TOLERANCE	LTR	REVISION RECORD	NAME	DATE	LTR	REVISION RECORD	NAME	DATE
Tom Shih		mm	.0 ±0.40		倒角方向錯誤修改：合併料號	王誠賢	2011/06/20				
CHECKED BY	PROJ	VER NO.	.00 ±0.20		修改料號	王誠賢	2011/11/01				
Erin Chou		a5	.000 ±0.10		產品應用敘述修改	王誠賢	2012/01/30				
DRAWN BY	DATE	SIZE	ANGLE		add 2p view	Jeff	2016/01/21				
Tom Lee	2016/08/12	A4	0° ±1°		修改環境溫度-40-105	Tom Lee	2016/08/12				
			.0° ±		ECR-00000193	Tom Lee	2016/12/12				
			SHEET 1/1								

PART NO JS-6350WX-XX(XX)
6.35mm Power Connector, Plug Type

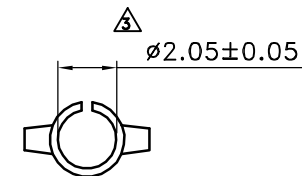
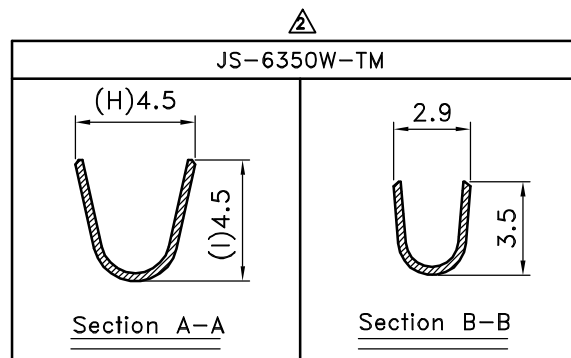
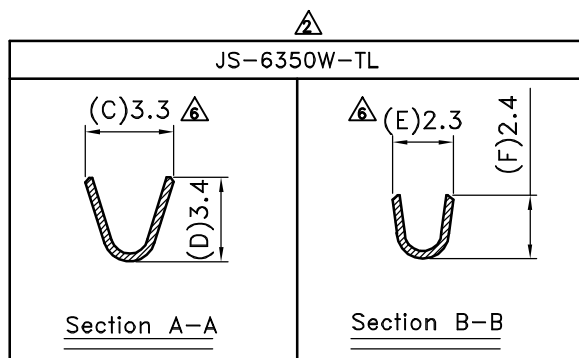
CUSTOMER

Conforms to The RoHS Instruction



- SPECIFICATIONS**
- Voltage Rating 600 :V AC/DC
 - Current Rating: 2~5 Circuit 12A AC/DC
6~15 Circuit 9A AC/DC
 - Withstanding Voltage : 2,900V AC/minute
 - Insulation Resistance : 1,000MΩ min
 - Temperature Range : - 40°C to + 105°C
 - Contact Resistance : 20mΩ max

- TERMINAL**
- Part No. : JS-6350W-TX
 - Product Code ①
 - High Crimp Type:
M:Middle
L:Low
 - Applicable Wires:
1. TL : AWG# 18 ~ 22
2. TM : AWG# 16 ~ 20
 - Material : Brass
 - Plated : Tin Plated
 - Thickness : 0.30mm
 - Mating Housing : JS-6350W-XX JS-6350H-XX
 - Q' ty: 5,000 pcs./Reel

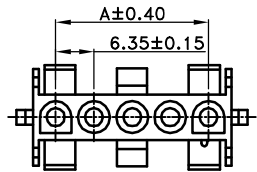


喬訊電子工業股份有限公司
CHYAO SHIUNN
ELECTRONIC INDUSTRIAL LTD.

APPROVED BY	SCALE	UNIT	TOLERANCE	LTR	REVISION RECORD	NAME	DATE	LTR	REVISION RECORD	NAME	DATE
Tom Shih		mm	.0 ±0.30	▲	RoHS compliant	林 暉	2006/04/01	▲	新增材質標示	Eddie	2018/11/16
CHECKED BY	PROJ	VER NO.	.00 ±0.20	▲	ECR 201101-002 TL & TM 合併圖面 修改尺寸	劉怡萱	2011/03/17	▲			
Erin Chou		a8	.000 ±0.10	▲	因產品需求特修訂公差上下限&尺寸	劉怡萱	2011/04/25	▲			
DRAWN BY	DATE	SIZE	ANGLE		修改物性表	張逸維	2012/11/20	CUSTOMER			Conforms to The RoHS Instruction
Eddie	2023/08/23	A4	0°	±1°	修改環境溫度-40-105	Tom Lee	2016/08/09				
			.0°	±	修改圖面尺寸	Eddie	2018/11/16				
			SHEET	1/1	修改圖面尺寸	Eddie	2022/06/16				

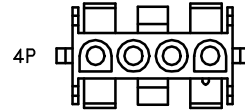
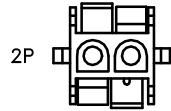
PART NO JS-6350W-TX
ø2.13mm Power Connector Female Terminal

Single Row



Single Row

Poles	Dimensions (mm)		
	A	B	C
02	6.35	13.97	27.40
03	12.70	20.32	27.40
04	19.05	26.67	27.50
05	25.40	33.20	27.50

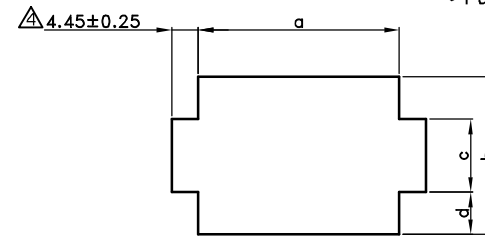
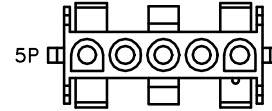
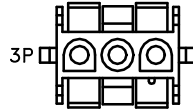
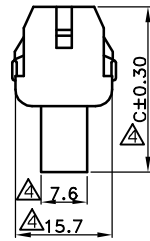
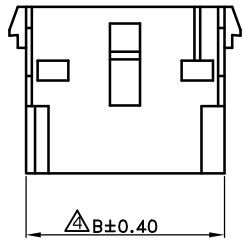


■ SPECIFICATIONS

- Current Rating :
 1. 2~5 Circuit : 12A Max. (With UL1015 AWG #12)
 2. 2x3~5x3 Circuit : 9A Max. (With UL1007 AWG #16)
- Withstanding Voltage : 2,900V AC/minute
- Insulation Resistance : 1,000MΩ min
- Temperature Range : -40 °C to + 105°C
- Contact Resistance : 20mΩ max

■ RECEPTACLE

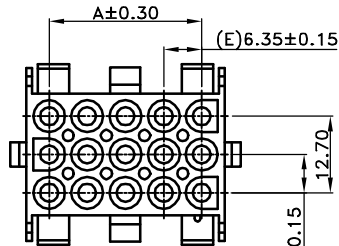
- Part No. : JS-6350HX-XX(XX) ⚠
- ① Mated Terminal Type
F : Mated with Female Type
M : Mated with Male Type
- ② Poles
Single-Row : 02~05
Triple-Row : 02x3, 03x3, 04x3, 05x3
- ③ Material
Blank : Nylon66 UL94V-2
V0 : Nylon66 UL94V-0
- Material : Refer the above options
- Mate Part :
 1. 6350WM Series (with 6350HF) ⚠
 2. 6350WF Series (with 6350HM) ⚠
- Packing : Bag



Single Row

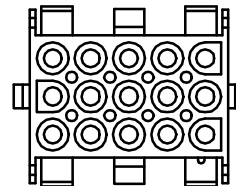
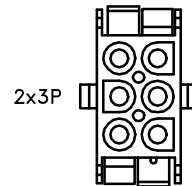
Poles	Dimensions (mm)			
	a	b	c	d
2	14.35	13.50	8.64	2.41
3	20.70			
4	27.05			
5	33.40			

Triple Row



Triple Row

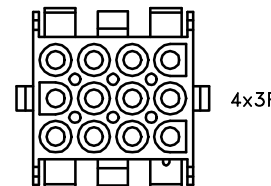
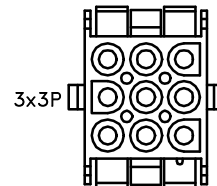
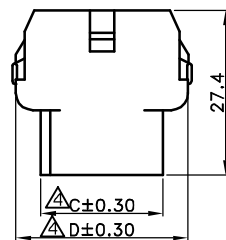
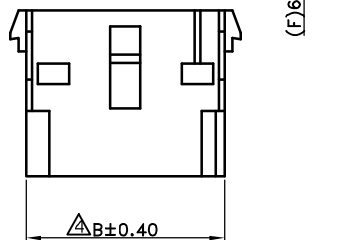
Poles	Dimensions (mm)			
	A	B	C	D
2*3	6.35	13.97	20.30	28.65
3*3	12.70	20.50	20.50	28.70
4*3	19.05	26.90	20.50	28.80
5*3	25.40	33.30	20.40	28.80



Recommended Panel Cutout

Triple Row

Poles	Dimensions (mm)			
	a	b	c	d
2x3	14.35	26.16	12.20	6.98
3x3	20.70			
4x3	27.05			
5x3	33.40			



<p>Male Terminal (Split Type): Product No. : 6350H-TX1</p> <p>※ Only available to use in Triple-Row</p>	<p>Male Terminal (Solid Type): Product No. : 6350H-TX</p> <p>※ Only available to use in Single-Row</p>	<p>Female Terminal: Product No. : 6350W-TX</p>
Mated with 6350WF		Mated with 6350WM

喬訊電子工業股份有限公司
CHYAO SHIUN ELECTRONIC INDUSTRIAL LTD.

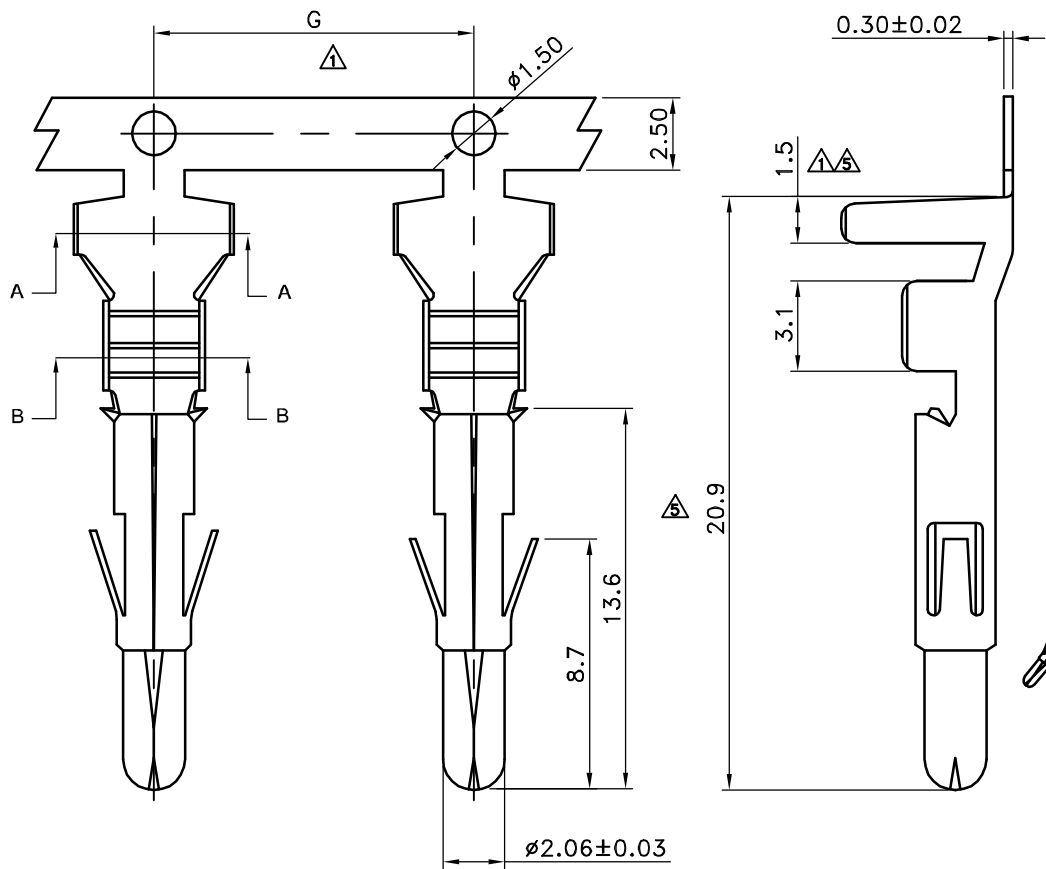
PART NO | JS-6350HX-XX(XX)

6.35mm Wire to Wire Power Conn, Receptacle Type

APPROVED BY	SCALE	UNIT	TOLERANCE	LTR	REVISION RECORD	NAME	DATE	LTR	REVISION RECORD	NAME	DATE
Tom Shih		mm	.0 ±0.40	⚠	合併並修改料號	王誠賢	2011/11/01	⚠			
CHECKED BY	PROJ	VER NO.	.00 ±0.20	⚠	產品應用敘述修改	王誠賢	2012/01/30	⚠			
Erin Chou		a4	.000 ±0.10	⚠	修改環境溫度-40-105	Tom Lee	2016/08/09	⚠			
DRAWN BY	DATE	SIZE	ANGLE		ECR-00000193	Tom Lee	2017/12/12				
Tom Lee	2017/11/29	A4	0° ±1°	⚠							
			.0° ±	⚠							
			SHEET 1/1	⚠							

CUSTOMER

Conforms to The RoHS Instruction



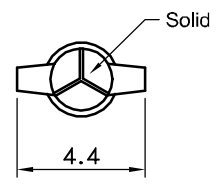
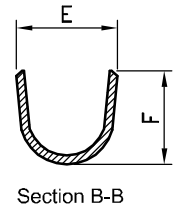
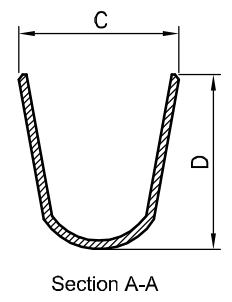
- ▲ SPECIFICATIONS**
- Voltage Rating : 600V AC/DC
 - Current Rating : 2~5 Circuit 12A AC/DC
6~15 Circuit 9A AC/DC
 - Withstanding Voltage : 2900V AC/minute.
 - Insulation Resistance: 1000M Ω min
 - Temperature Range : - 40°C to + 105°C
 - Contact Resistance : 20m Ω max ▲

■ MALE TERMINAL(SOLID)

- Part No. : JS-6350H-TX

- ▲ ① Product Code ①
High Crimp Type:
M: Middle
L: Low
H: High

- Applicable Wires :
1.TM : AWG # 16 ~ 20
2.TL : AWG # 18 ~ 22
3.TH : AWG # 12 ~ 14
(Only available to use in Single-Row)
- Material : Brass
- Finish : Tin Plated
- Thickness : 0.3mm ▲
- Q' ty : H : 5,000 pcs./Reel
M : 5,000 pcs./Reel
L : 5,000 pcs./Reel



Part No	Dimension(mm)				
	C	D	E	F	G
JS-6350H-TH	6.7	5.8	3.3	4.1	15.7
JS-6350H-TM	4.5	4.5	2.9	3.5	10.9
JS-6350H-TL	3.3	3.4	2.3	2.4	



喬訊電子工業股份有限公司
CHYAO SHIUNN
ELECTRONIC INDUSTRIAL LTD.

APPROVED BY	SCALE	UNIT	TOLERANCE	LTR	REVISION RECORD	NAME	DATE	LTR	REVISION RECORD	NAME	DATE
Tom Shih		mm	.0 ±0.30	▲	修改物性表	林謙豪	2012/03/20	▲			
CHECKED BY	PROJ	VER NO.	.00 ±0.20	▲	修改物性表, 包裝數量	張逸維	2013/03/28	▲			
Erin Chou	☉	a5	.000 ±0.10	▲	增加捲繞方向圖	吳弘文	2014/10/24	▲			
DRAWN BY	DATE	SIZE	0° ±1°	▲	修改環境溫度-40~105	Tom Lee	2016/08/09				
Eddie	2022/06/16	A4	.0° ±	▲	修改圖面尺寸	Eddie	2022/06/16				
			SHEET 1/1	▲							

PART NO JS-6350H-TX

φ2.13mm Power Connector Male Terminal(Solid)

CUSTOMER

Conforms to The RoHS Instruction