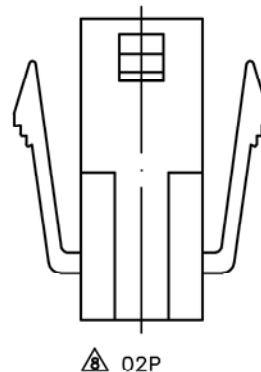
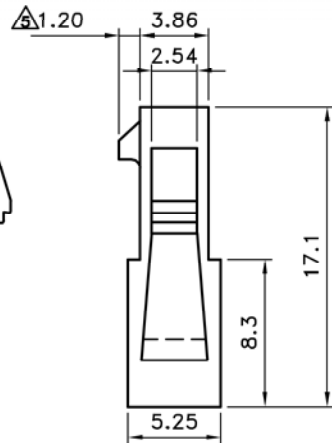
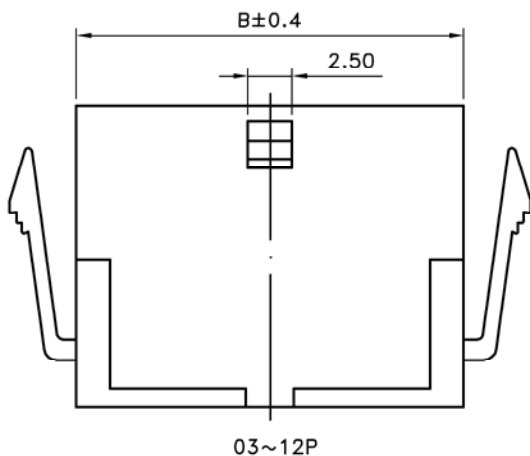
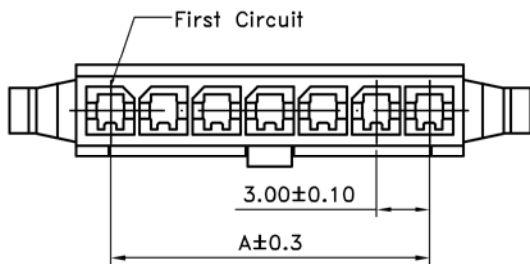


Recommend Panel cut-out
General Tolerance ± 0.05



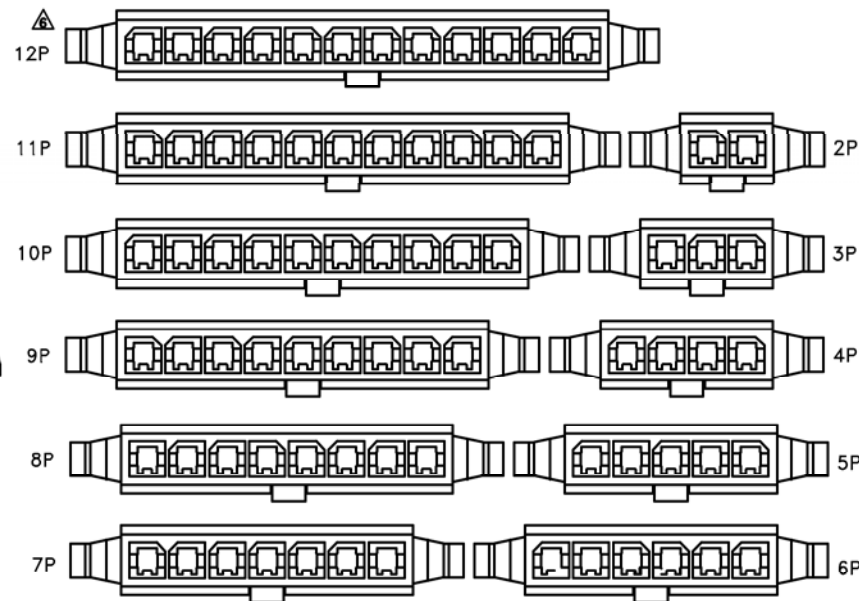
Poles	Dimensions (mm)			
	A	B	C	D
2	3.00	6.85	7.20	10.90
3	6.00	9.85	10.20	13.90
4	9.00	12.85	13.20	16.90
5	12.00	15.85	16.20	19.90
6	15.00	18.85	19.20	22.90
7	18.00	21.85	22.20	25.90
8	21.00	24.85	25.20	28.90
9	24.00	27.85	28.20	31.90
10	27.00	30.85	31.20	34.90
11	30.00	33.85	34.20	37.90
12	33.00	36.85	37.20	40.90

■ SPECIFICATIONS

- Current rating : 5A AC/DC
- Withstanding voltage : 1,500V AC/minute
- ▲ Insulation resistance : 1,000M Ω min. initial
- Temperature range : -40°C ~ +105°C
- Contact resistance : 20m Ω max.

■ PLUG HOUSING

- Part No. : JS-3024S-XX
- Poles : 2-12(Single Row, with Ear)
- Material : Nylon 66 UL 94V-0
- Q' ty : 1000 pcs./Bag

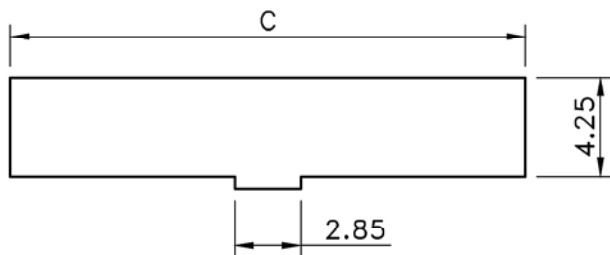


喬訊電子工業股份有限公司
CHYAO SHIUNN
ELECTRONIC INDUSTRIAL LTD.

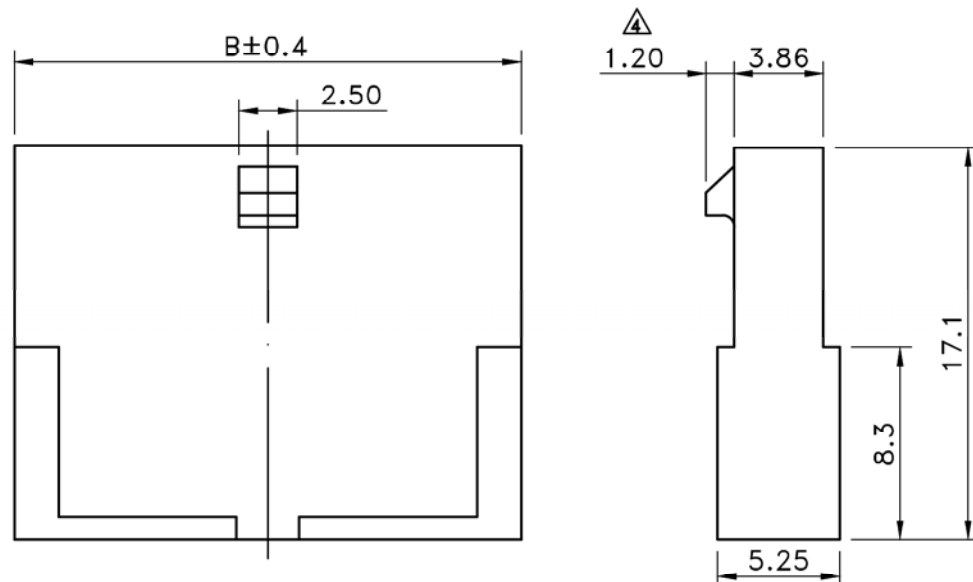
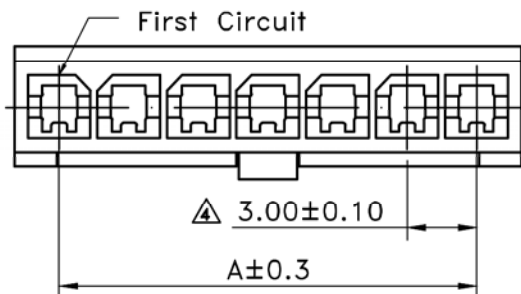
PART NO JS-3024S-XX

3.00mm Single-Row Wire to Wire Power Connector Series.

APPROVED BY	SCALE	UNIT	TOLERANCE	LTR	REVISION RECORD	NAME	DATE	LTR	REVISION RECORD	NAME	DATE
Tom Shih		mm	.0 ± 0.30	▲	RoHS compliant	余秀麗	06/06/22	▲	新增2P產品外觀圖示	Tom Lee	18/01/18
CHECKED BY	PROJ	VER NO.	.00 ± 0.20	▲	200804-017	黃科源	08/04/21	▲			
Erin Chou	⊗	d8	.000 ± 0.10	▲	200806-023	黃科源	08/06/17	▲			
DRAWN BY	DATE	SIZE	ANGLE		200810-009	黃科源	08/10/22	CUSTOMER			
Tom Lee	2018/01/18	A4	0° $\pm 1°$	▲	環境溫度變更-40°C to +105°C	劉怡萱	11/02/09	Conforms to The RoHS Instruction			
			0° \pm	▲	蜂槽圖面少耳朵	劉怡萱	11/03/25				
			SHEET 1/1	▲	依ECR-00000160修改產品敘述	李柏昇	16/08/02				



△ Recommend Panel cut-out
General Tolerance ± 0.05



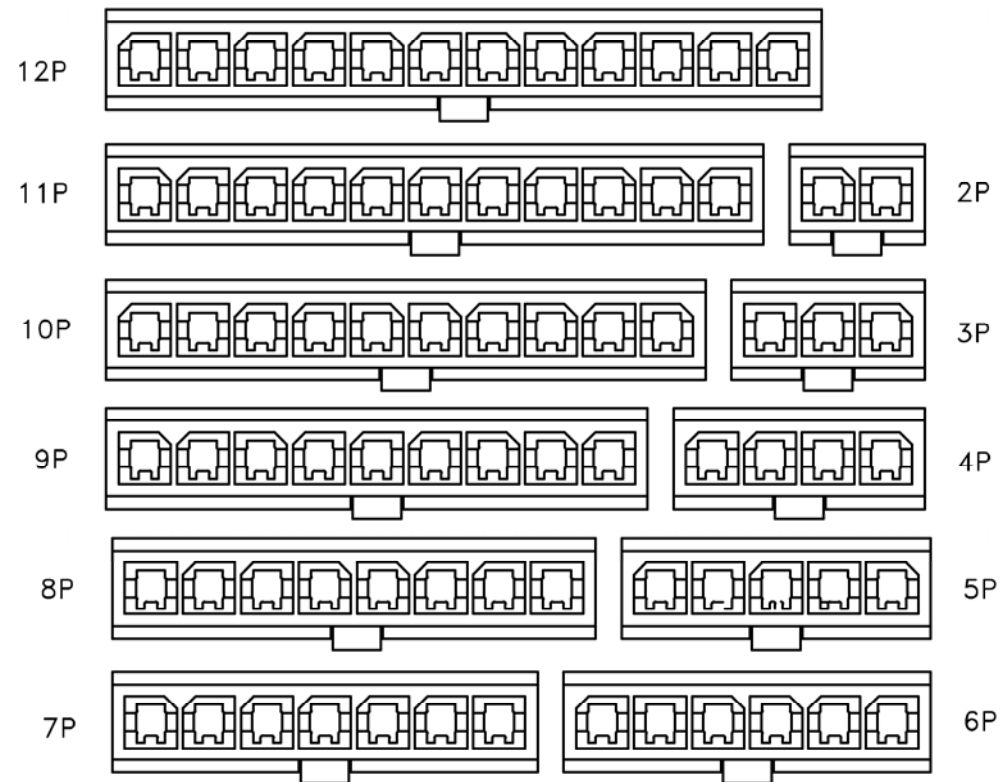
Poles	Dimensions (mm)		
	A	B	C
2	3.00	6.85	7.20
3	6.00	9.85	10.20
4	9.00	12.85	13.20
5	12.00	15.85	16.20
6	15.00	18.85	19.20
7	18.00	21.85	22.20
8	21.00	24.85	25.20
9	24.00	27.85	28.20
10	27.00	30.85	31.20
11	30.00	33.85	34.20
12	33.00	36.85	37.20

■ SPECIFICATIONS

- Current rating : 5A AC/DC
- Withstanding voltage : 1,500V AC/minute
- Insulation resistance : 1,000M Ω min. initial
- △ • Temperature range : $-40^{\circ}\text{C} \sim +105^{\circ}\text{C}$
- Contact resistance : 20m Ω max.

■ PLUG HOUSING

- Part No. : JS-3024S-XX WO/E
- Poles : 2-12(Single Row)
- Material : Nylon 66 UL 94V-0
- Q' ty : 1000 pcs./Bag

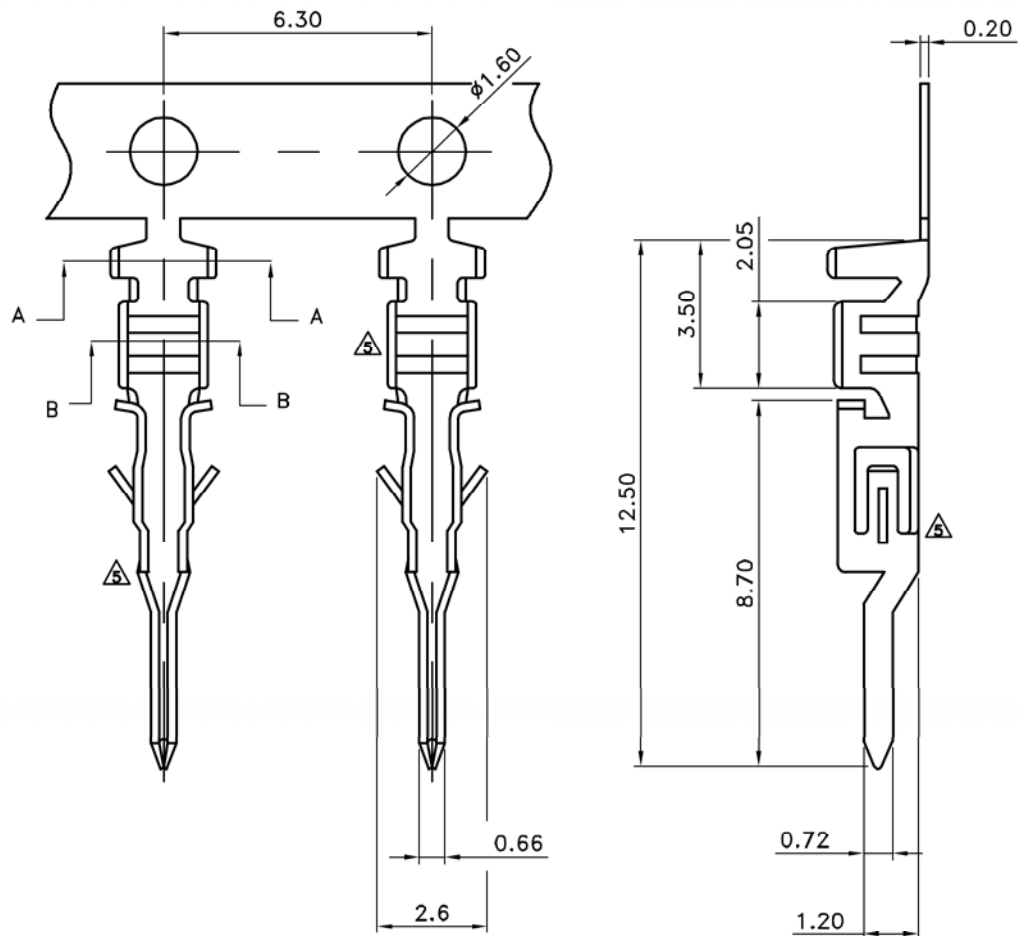


 喬訊電子工業股份有限公司
CHYAO SHIUNN
ELECTRONIC INDUSTRIAL LTD.

APPROVED BY	SCALE	UNIT	TOLERANCE	LTR	REVISION RECORD	NAME	DATE	LTR	REVISION RECORD	NAME	DATE
張育瑞		mm	.0 ± 0.30	△	200804-018	黃科源	08/04/21	△			
CHECKED BY	PROJ	VER NO.	.00 ± 0.20	△	200806-024	黃科源	08/06/17	△			
簡鴻彬		a5	.000 ± 0.10	△	200810-009	黃科源	08/10/22	△			
DRAWN BY	DATE	SIZE	ANGLE	△	環境溫度變更 -40°C to $+105^{\circ}\text{C}$	劉怡萱	11/02/09				
李柏昇	2016/08/02	A4	0° $\pm 1^{\circ}$	△	依 ECR-00000160 修改產品敘述	李柏昇	16/08/02				
			.0° \pm	△							
			SHEET 1/1	△							

CUSTOMER
Conforms to The RoHS Instruction

PART NO JS-3024S-XX WO/E
3.00mm Single-Row Wire to Wire Power Connector Series.

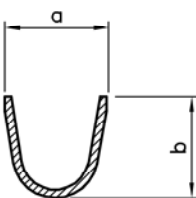


■ SPECIFICATIONS

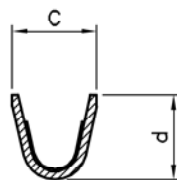
- Voltage rating : 250V AC/DC
- Current rating : 5A AC/DC
- Withstanding voltage : 1,500V AC/minute
- Insulation resistance : 1,000MΩ min. initial
- Temperature range : - 40°C to + 85°C
- Contact resistance : 20mΩ max.

■ TERMINAL

- Part No. : JS-3024-T, JS-3024-TL
- Applicate wire: JS-3024-T AWG #20-24
JS-3024-TL AWG #26-30
- Material : Phos. Bronze
- Finish : Tin plated
- Thickness : 0.2mm
- Q' ty : 10,000 pcs./Reel



A-A SEC



B-B SEC

Wire size	Part No.	Dim a	Dim b	Dim c	Dim d
AWG#20-24	JS-3024-T	2.70	2.40	2.10	2.10
AWG#26-30	JS-3024-TL	2.40	1.90	1.80	1.50

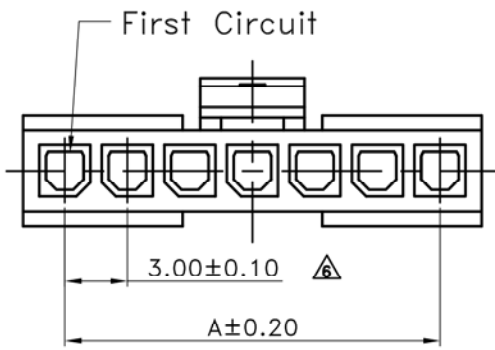


喬訊電子工業股份有限公司
CHYAO SHIUNN
ELECTRONIC INDUSTRIAL LTD.

PART NO JS-3024-T, JS-3024-TL

3.00mm Power Connectors Terminal

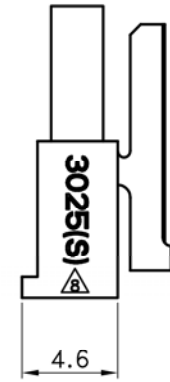
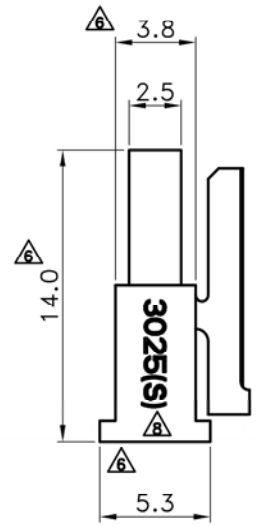
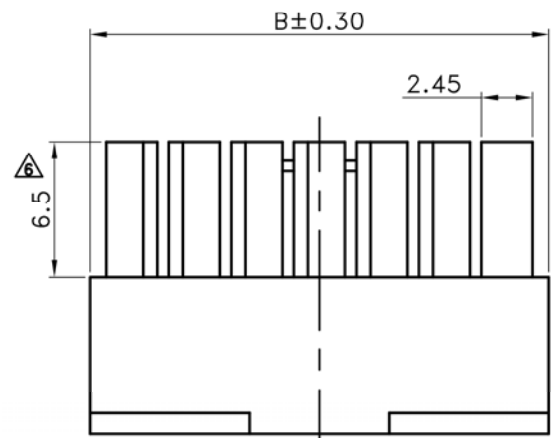
APPROVED BY	SCALE	UNIT	TOLERANCE	LTR	REVISION RECORD	NAME	DATE	LTR	REVISION RECORD	NAME	DATE
Tom Shih		mm	.0 ±0.30	▲	DG 200503-001	余秀麗	2005/03/08	▲			
CHECKED BY	PROJ	VER NO.	.00 ±0.20	▲	200905-013	黃科源	2009/05/25	▲			
Erin Chou		a5	.000 ±0.10	▲	增加端子捲繞方向圖	吳弘文	2014/10/23	▲			
DRAWN BY	DATE	SIZE	ANGLE	▲	依CCR-00000160修改產品敘述	李柏昇	2016/08/02	▲	CUSTOMER		
Tom Lee	2017/06/27	A4	0° ±1°	▲	修改端子外觀圖示	Tom Lee	2017/06/27	▲			
			.0° ±	▲				▲	Conforms to The RoHS Instruction		
			SHEET 1/1	▲							



Poles	Dimensions	
	A	B
2	3.00	7.00
3	6.00	10.00
4	9.00	13.00
5	12.00	16.00
6	15.00	19.00
7	18.00	22.00
8	21.00	25.00
9	24.00	28.00
10	27.00	31.00
11	30.00	34.00
12	33.00	37.00

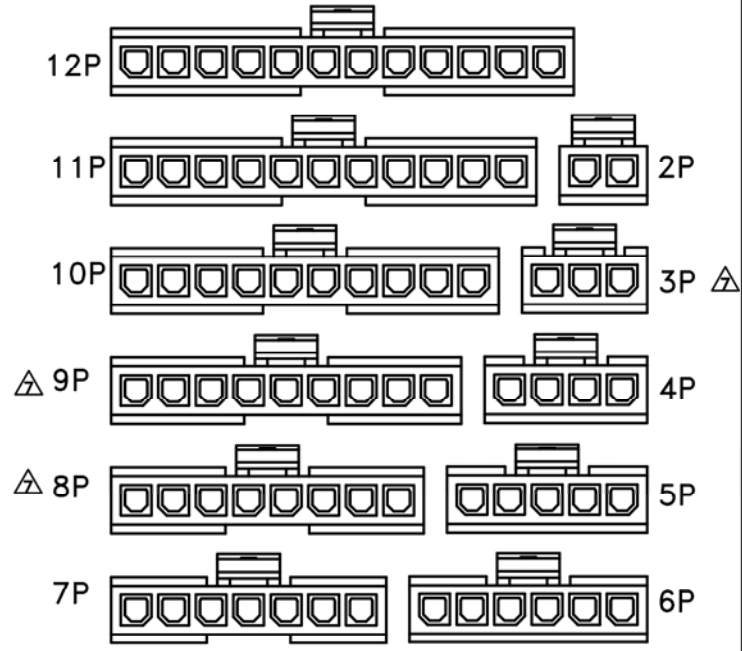
- **SPECIFICATIONS**
- Current rating : 5A AC/DC
 - Withstanding voltage : 1,500V AC/minute
 - Insulation resistance : 1,000MΩ min.
 - △• Temperature range : -40°C~105°C max.
 - Contact resistance : 10mΩ max.

- **HOUSING**
- Part No. : JS-3025S-XX
 - Poles : 2-12(Single Row)
 - Material : Nylon 66 UL 94V-0 Black (Non-Halogen) △
 - Q' ty : 1,000 pcs./Bag



3~12 Circuit

△ 2 Circuit



喬訊電子工業股份有限公司

CHYAO SHIUNN
ELECTRONIC INDUSTRIAL LTD.

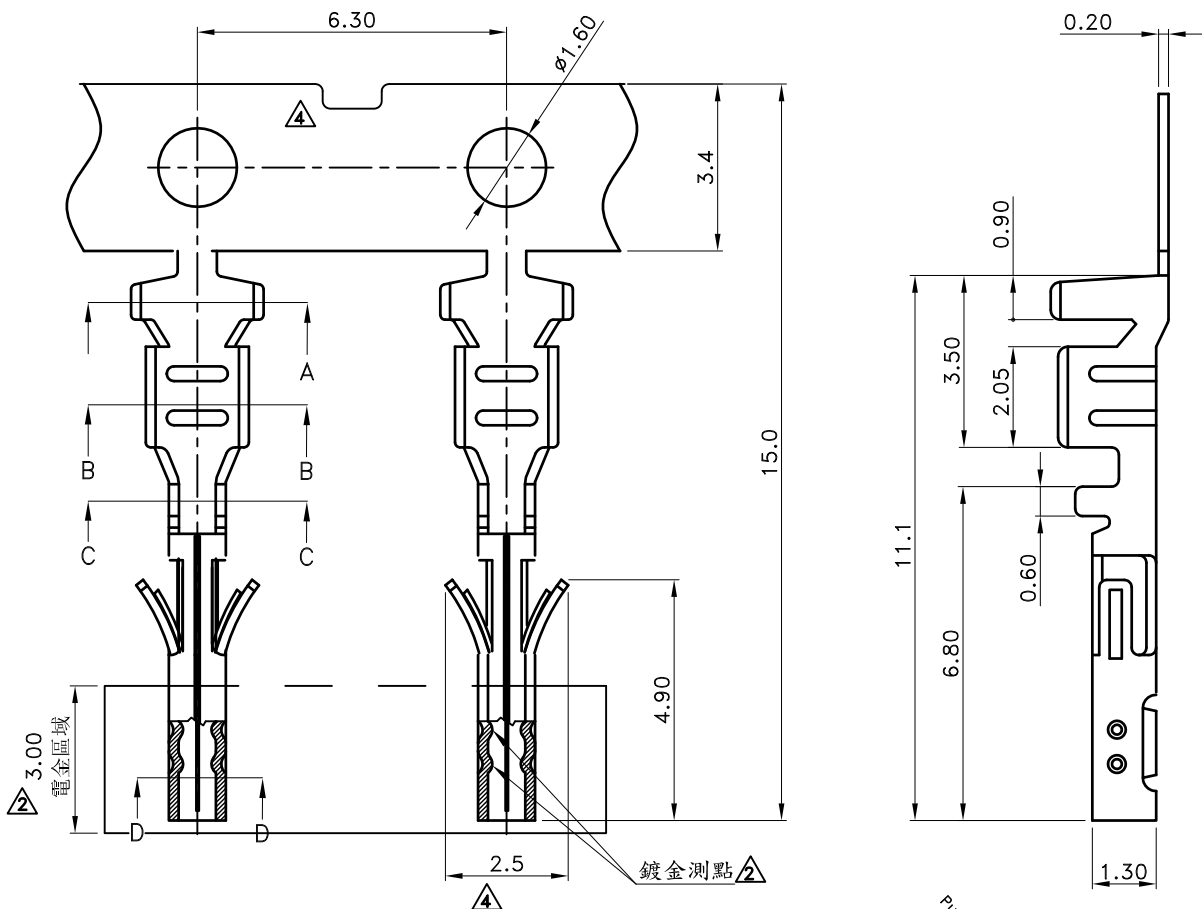
PART NO JS-3025S-XX

3.00mm Single-Row Wire to Wire Power Connector Series.

APPROVED BY	SCALE	UNIT	TOLERANCE	LTR	REVISION RECORD	NAME	DATE	LTR	REVISION RECORD	NAME	DATE
Tom Shih		mm	.0 ±0.30	△	RoHS compliant	黃科源	06/06/22	△	依ECR-00000160修改產品敘述	李柏昇	2016/08/02
CHECKED BY	PROJ	VER NO.	.00 ±0.20	△	200804-020	黃科源	08/04/22	△	取消2P正視圖,與其他P數相同	Erin	2018/12/25
張育瑞	⊕	a11	.000 ±0.10	△	200804-020	黃科源	08/10/22	△	增加無齒標示	謝君	2020/12/11
DRAWN BY	DATE	SIZE	ANGLE	△	DG200910-004	王磊	09/10/27				
謝君	2020/12/11	A4	0° ±1°	△	環境溫度變更-40°C to +105°C	劉怡萱	2011/02/09				
			0° ±	△	蜂槽錯誤變更	劉怡萱	2011/03/24				
			SHEET 1/1	△	增加"3025(S)"印字	鄭小嬌	2015/04/20				

CUSTOMER

Conforms to The RoHS Instruction



■ SPECIFICATIONS

- Current rating : 5A AC/DC
- Withstanding voltage : 1,500V AC/minute
- Insulation resistance : 1,000MΩ min. initial
- Temperature range : - 40°C to + 85°C
- Contact resistance : 20mΩ max.

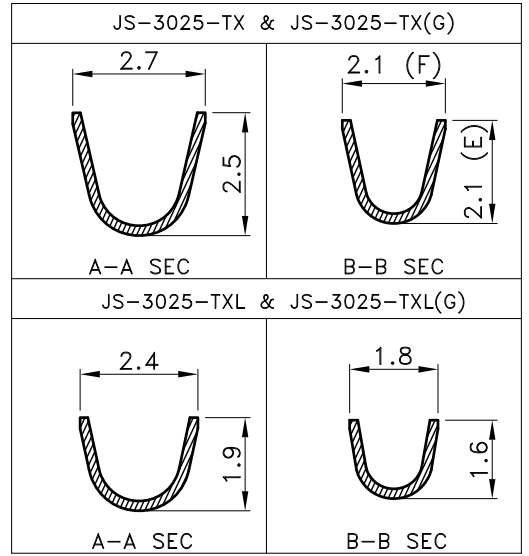
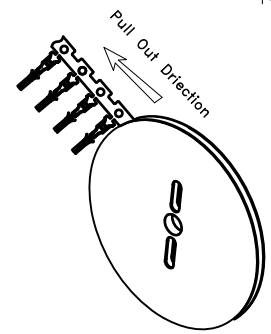
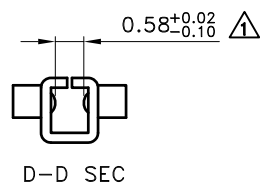
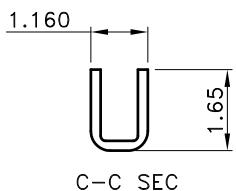
■ TERMINAL

- Part No. : JS-3025-T X (X) (X)

- ① Process
Blank :Plating before Stamp
P: Stamping before Plated
- ② Crimp Angle
Blank : High Crimp
L : Low Crimp
- ③ Plated
Blank :120u' min.TIN over 30u' min.NICKEL
G : 0.8u' min. AU over 30u' min. NICKEL.
- Applicable Wire :
1. High Crimp : AWG #20~24
2. Low Crimp : AWG #26~30
- Material : Phos. Bronze
- Plated : Reference to the said options
- Q' ty : 10,000 pcs./Reel

3.00
鍍金區域

鍍金測點



 喬訊電子工業股份有限公司
CHYAO SHIUNN
ELECTRONIC INDUSTRIAL LTD.

PART NO JS-3025-TX
3.00mm Power Connector, Crimp Terminal

APPROVED BY	SCALE	UNIT	TOLERANCE	LTR	REVISION RECORD	NAME	DATE	LTR	REVISION RECORD	NAME	DATE
張育瑞		mm	.0 ±0.30	△	ECR 201012 005 修改圖面尺寸 併圖	吳沛倫	2010/12/22				
CHECKED BY	PROJ	VER NO.	.00 ±0.20	△	增加鍍金區域, 測點及電鍍規格	黃廣珍	2013/08/20				
劉娜		a5	.000 ±0.10	△	增加端子捲繞方向圖	吳弘文	2014/10/23				
DRAWN BY	DATE	SIZE	ANGLE		按實物修改料帶形狀及變更尺寸管控	吳小平	2015/07/07	CUSTOMER		Conforms to The RoHS Instruction	
謝君	2022/08/05	A4	0° ±1°	△	增加先沖后鍍選項	謝君	2022/08/05				
			.0° ±	△							
			SHEET	1/1							