

Poles	Dimensions (mm)			
	A	B	C	D
2	---	4.00	4.21	7.90
4	3.00	7.00	7.21	10.90
6	6.00	10.00	10.21	13.90
8	9.00	13.00	13.21	16.90
10	12.00	16.00	16.21	19.90
12	15.00	19.00	19.21	22.90
14	18.00	22.00	22.20	25.90
16	21.00	25.00	25.20	28.90
18	24.00	28.00	28.20	31.90
20	27.00	31.00	31.22	34.90
22	30.00	34.00	34.22	37.90
24	33.00	37.00	37.22	40.90

**SPECIFICATIONS**

- Current rating : 5A AC/DC
- Withstanding voltage : 1,500V AC/minute
- Insulation resistance : 1,000MΩ min. initial
- Temperature range : - 40°C to + 105°C
- Contact resistance : 20mΩ max.

**PLUG HOUSING**

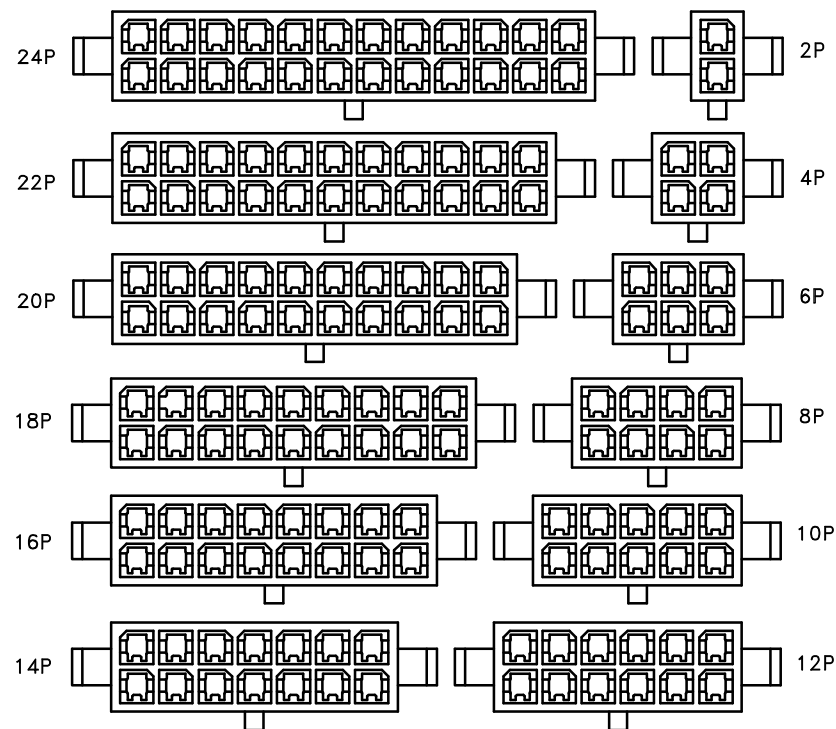
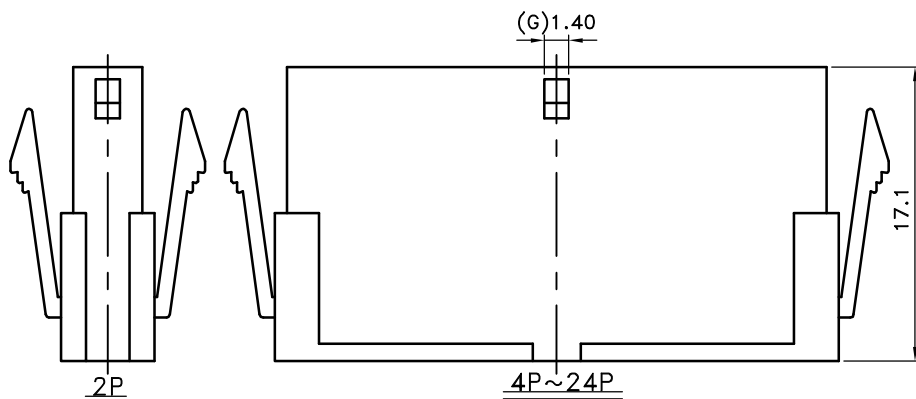
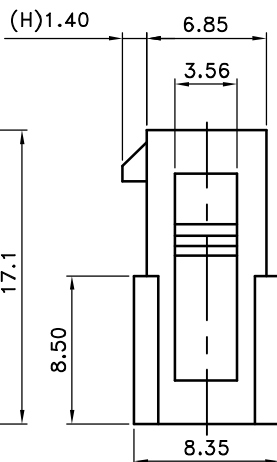
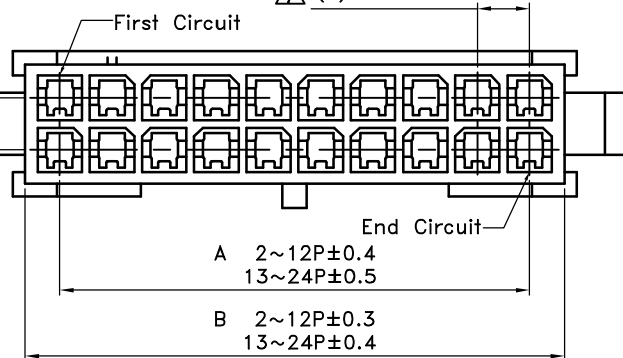
- Part No. : JS-3024-XX
- Poles : 2-24(Double Row , With Ear)
- Material : Nylon 66 UL 94V-0 ; Color : Black
- Q'ty : 1,000 pcs./Bag

Recommend Panel cut-out

General Tolerance ±0.05

(E) 3.00±0.10

(F) 3.00±0.10



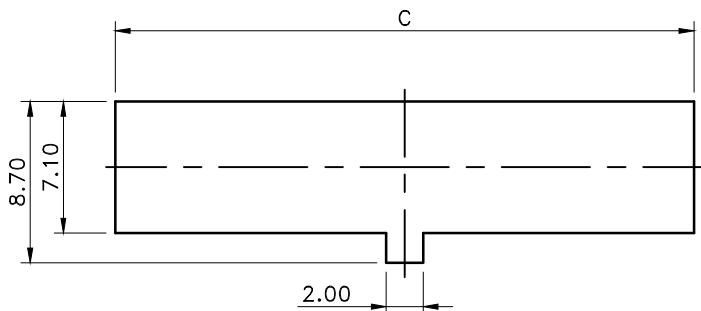
喬訊電子工業股份有限公司

CHYAO SHIUNN  
ELECTRONIC INDUSTRIAL LTD.

APPROVED BY	SCALE	UNIT	TOLERANCE	LTR	REVISION RECORD	NAME	DATE	LTR	REVISION RECORD	NAME	DATE
Tom Shih		mm	.0 ±0.30	△	RoHS compliant	余秀麗	06/04/01	△	外觀修正, 增加2p外觀	吳弘文	2014/10/20
CHECKED BY	PROJ	VER NO.	.00 ±0.20	△	200804-019	黃科源	08/04/22	△	依ECR-00000160修改產品敘述	李柏昇	2016/08/02
Erin Chou		a10	.000 ±0.10	△	200805-017	黃科源	08/05/30	△	增加塑膠本體顏色敘述	Eddie	2021/11/26
DRAWN BY	DATE	SIZE	ANGLE	△	200806-022	黃科源	08/06/17	△			
Eddie	2021/11/26	A4	0° ±1°	△	200810-009	黃科源	08/10/23	△			
			.0° ±	△	200910-003	黃科源	09/10/13	△			
			SHEET 1/1	△	環境溫度變更-40°C to +105°C	劉怡萱	2011/02/08	△			

PART NO JS-3024-XX  
3.00mm Double-Row Wire to Wire Power Connector Series.

CUSTOMER  
Conforms to The RoHS Instruction



Recommend Panel cut-out  
General Tolerance  $\pm 0.05$

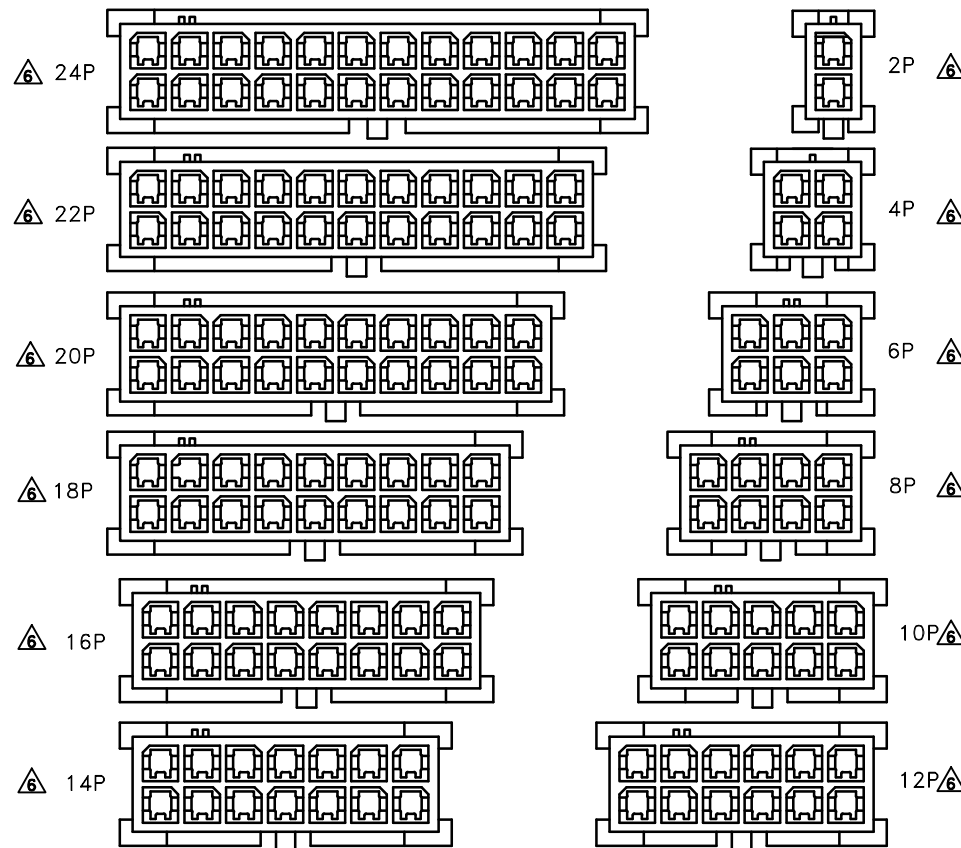
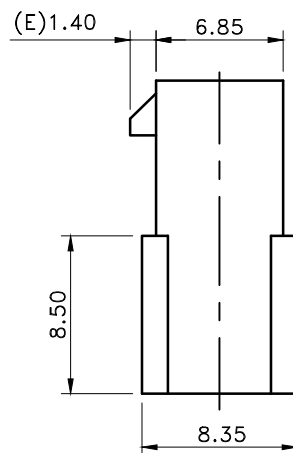
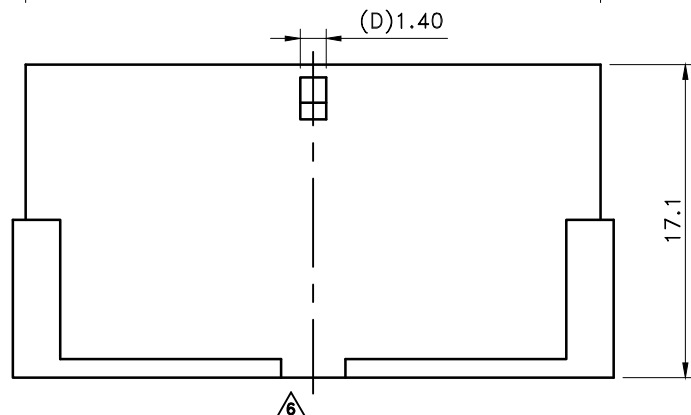
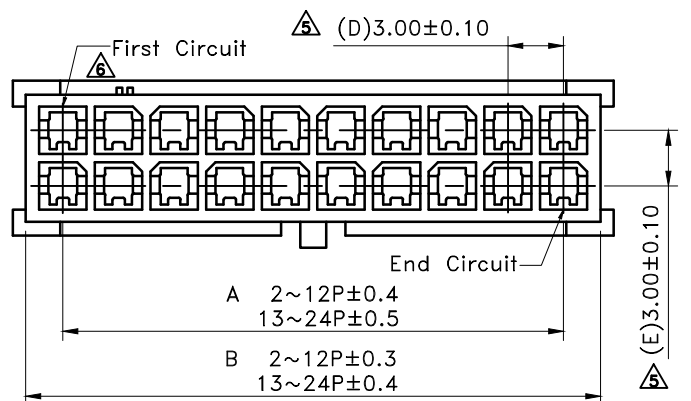
Poles	Dimensions (mm)		
	A	B	C
2	---	4.00	4.20
4	3.00	7.00	7.20
6	6.00	10.00	10.20
8	9.00	13.00	13.20
10	12.00	16.00	16.20
12	15.00	19.00	19.20
14	18.00	22.00	22.20
16	21.00	25.00	25.20
18	24.00	28.00	28.20
20	27.00	31.00	31.20
22	30.00	34.00	34.20
24	33.00	37.00	37.20

■ SPECIFICATIONS

- Current voltage : 250V AC/DC
- Current rating : 5A AC/DC
- Withstanding voltage : 1,500V AC/minute
- △ • Insulation resistance : 1,000M  $\Omega$  min. initial
- Temperature range : - 25°C ~ + 105°C
- Contact resistance : 20m  $\Omega$  max.

■ PLUG HOUSING

- Part No. : JS-3024-XXWO/E
- Poles : 2-24(Double Row)
- Material : Nylon 66 UL 94V-0
- Q' ty : 1,000 pcs./Bag

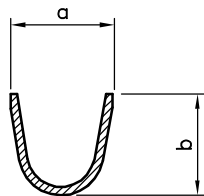
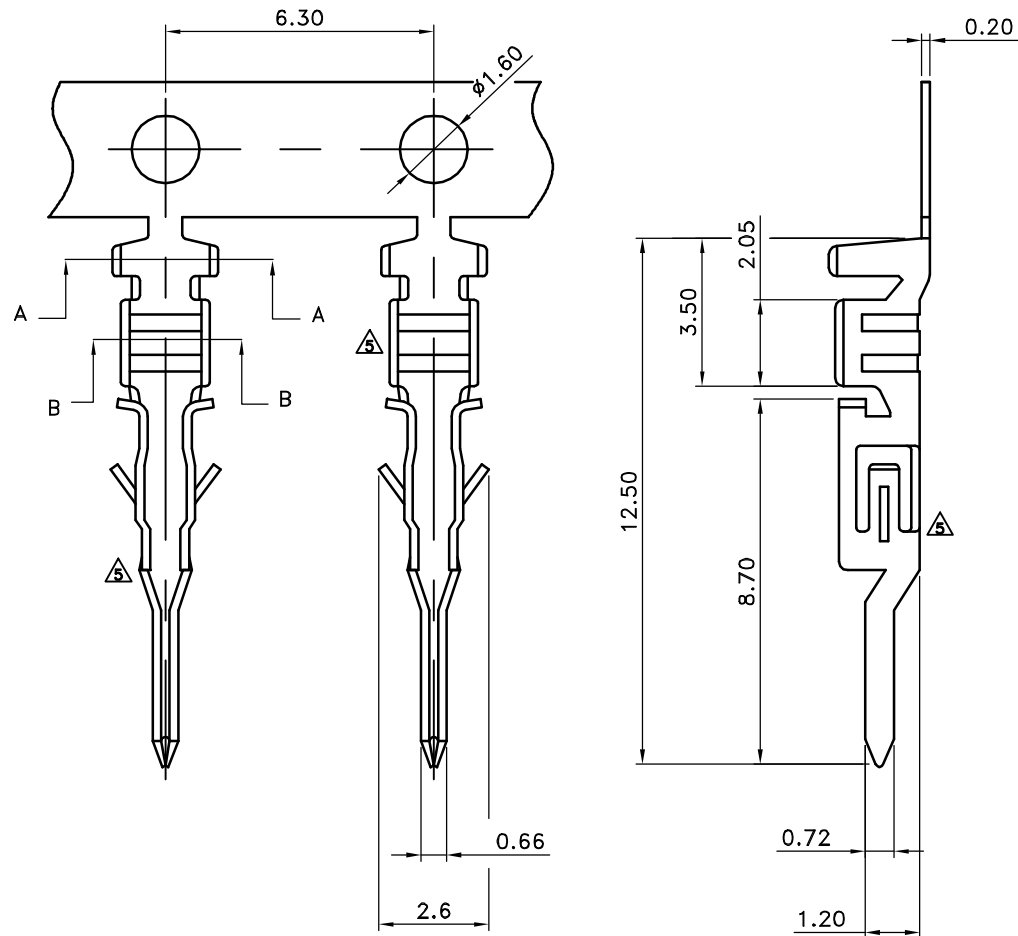


 喬訊電子工業股份有限公司  
CHYAO SHIUNN  
ELECTRONIC INDUSTRIAL LTD.

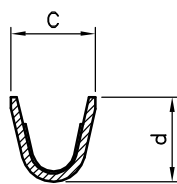
APPROVED BY	SCALE	UNIT	TOLERANCE	LTR	REVISION RECORD	NAME	DATE	LTR	REVISION RECORD	NAME	DATE
張育瑞		mm	.0 $\pm 0.30$	△	RoHS compliant	余秀麗	06/04/01	△			
CHECKED BY	PROJ	VER NO.	.00 $\pm 0.20$	△	200803-026	黃科源	08/04/07	△			
簡鴻彬		a7	.000 $\pm 0.10$	△	200808-021	黃科源	08/06/17	△			
DRAWN BY	DATE	SIZE	ANGLE	△	200810-009	黃科源	08/10/23	△	CUSTOMER		
李柏昇	2016/08/02	A4	0° $\pm 1°$	△	客戶需求圖面上的環境溫度變更-25°C to +105°C	劉怡萱	2011/02/09				
3.00mm Double-Row Wire to Wire Power Connector Series.			0° $\pm$	△	更正產品外觀	吳弘文	2014/04/16	△	Conforms to The RoHS Instruction		
			SHEET	1/1	依ECR-00000160修改產品敘述	李柏昇	2016/08/02				

PART NO JS-3024-XXWO-E

3.00mm Double-Row Wire to Wire Power Connector Series.



A-A SEC



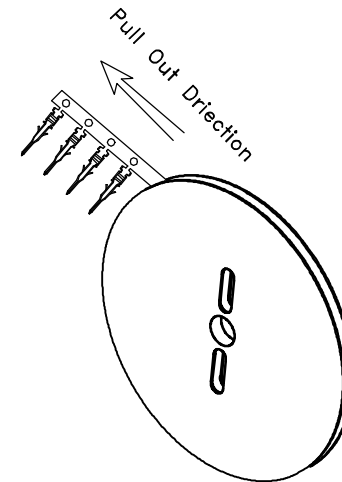
B-B SEC

■ SPECIFICATIONS

- Voltage rating : 250V AC/DC
- Current rating : 5A AC/DC
- Withstanding voltage : 1,500V AC/minute
- Insulation resistance : 1,000M $\Omega$  min. initial
- Temperature range : - 40 $^{\circ}$ C to + 85 $^{\circ}$ C
- Contact resistance : 20m $\Omega$  max.

■ TERMINAL

- Part No. : JS-3024-T, JS-3024-TL
- Applicate wire: JS-3024-T AWG #20-24  
JS-3024-TL AWG #26-30
- Material : Phos. Bronze
- Finish : Tin plated
- Thickness : 0.2mm
- Q' ty : 10,000 pcs./Reel



Wire size	Part No.	Dim a	Dim b	Dim c	Dim d
AWG#20-24	JS-3024-T	2.70	2.40	2.10	2.10
AWG#26-30	JS-3024-TL	2.40	1.90	1.80	1.50



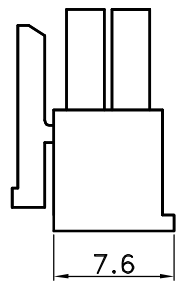
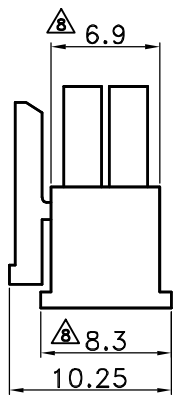
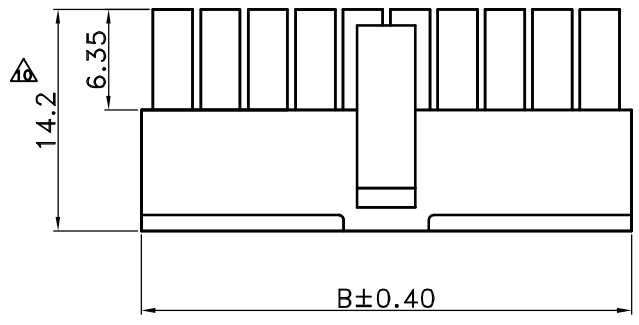
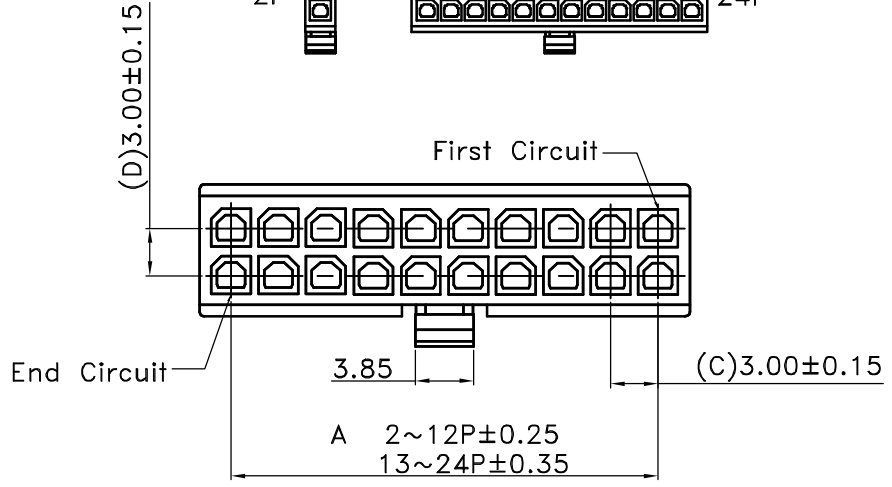
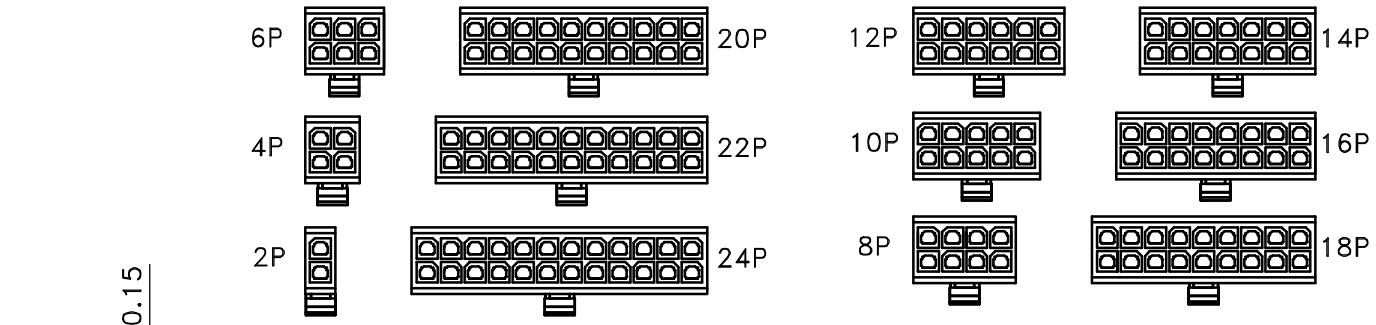
喬訊電子工業股份有限公司  
CHYAO SHIUNN  
ELECTRONIC INDUSTRIAL LTD.

APPROVED BY	SCALE	UNIT	TOLERANCE	LTR	REVISION RECORD	NAME	DATE	LTR	REVISION RECORD	NAME	DATE
Tom Shih		mm	.0 ±0.30	△	DG 200503-001	余秀麗	2005/03/08	△			
CHECKED BY	PROJ	VER NO.	.00 ±0.20	△	200905-013	黃科源	2009/05/25	△			
Erin Chou	⊕	a5	.000 ±0.10	△	增加端子捲繞方向圖	吳弘文	2014/10/23	△			
DRAWN BY	DATE	SIZE	ANGLE	△	依DCR-00000160修改產品敘述	李祐昇	2016/08/02	△			
Tom Lee	2017/06/27	A4	0° ±1°	△	修改端子外觀圖示	Tom Lee	2017/06/27	△			
			.0° ±	△				△			
			SHEET 1/1	△				△			

PART NO JS-3024-T, JS-3024-TL

3.00mm Power Connectors Terminal

CUSTOMER  
Conforms to The RoHS Instruction



6~24 Circuit

2&4 Circuit

- **SPECIFICATIONS**
- Current rating : 5A AC/DC
  - Withstanding voltage : 1,500V AC/minute
  - Insulation resistance : 1,000MΩ min. initial
  - △• Temperature range : - 40°C ~ + 105°C
  - Contact resistance : 20mΩ max.

■ **RECEPTACLE HOUSING**

- Part No. : JS-3025-XX X
  - ①
  - ②
- ① Poles : 2-24 (Double Row)
- ② Base Color : Blank : Black
  - △ W : White
- Material : Nylon 66 UL 94V-0
- Q' ty : 1000 pcs./Bag

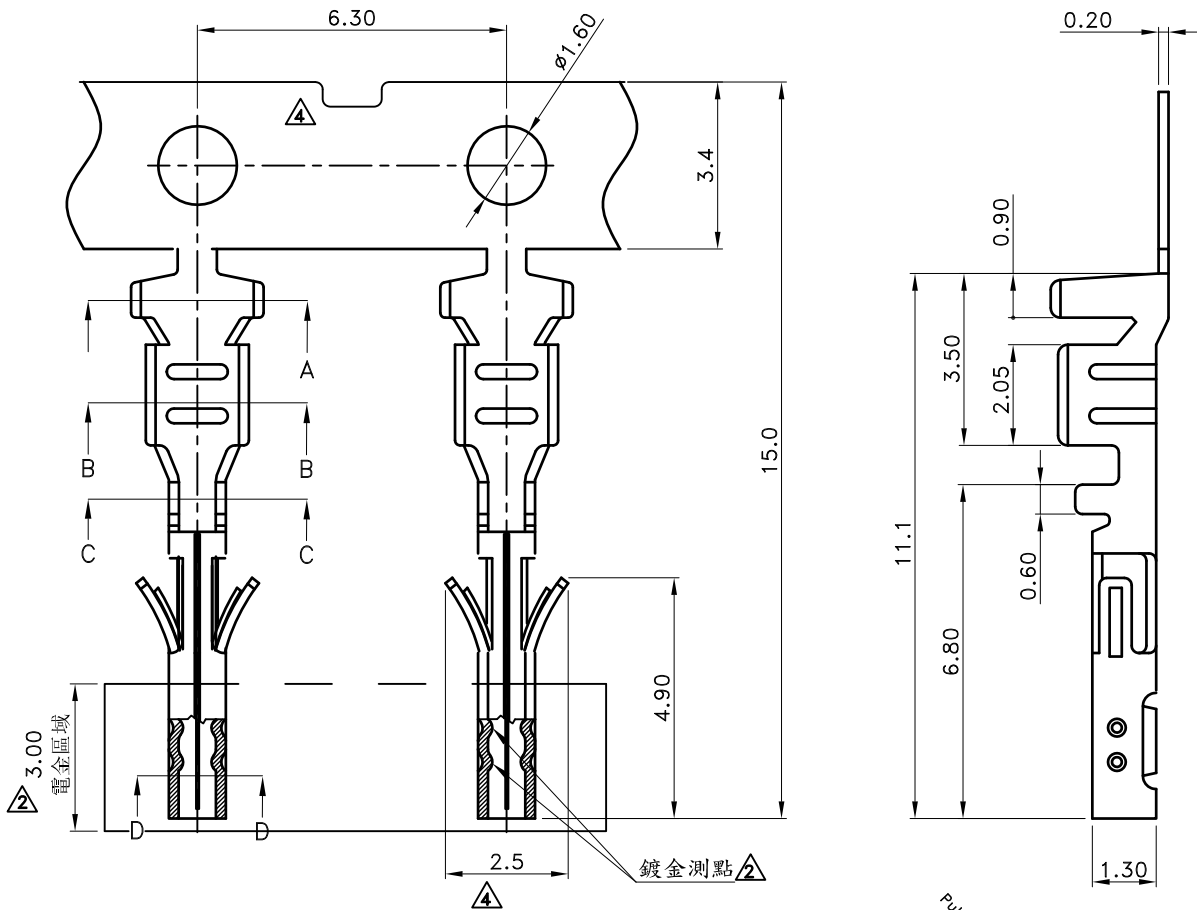
Poles	Dimensions(mm)	
	A	B
2	---	4.00
4	3.00	7.00
6	6.00	10.00
8	9.00	13.00
10	12.00	16.00
12	15.00	19.00
14	18.00	22.00
16	21.00	25.00
18	24.00	28.00
20	27.00	31.00
22	30.00	34.00
24	33.00	37.00

喬訊電子工業股份有限公司  
CHYAO SHIUNN  
ELECTRONIC INDUSTRIAL LTD.

APPROVED BY	SCALE	UNIT	TOLERANCE	LTR	REVISION RECORD	NAME	DATE	LTR	REVISION RECORD	NAME	DATE
Shih Tom		mm	.0 ±0.30	△	ECR 200507-003	曲智浩	2005/07/13	△	依ECR-00000160修改產品敘述	李柏昇	2016/08/02
CHECKED BY	PROJ	VER NO.	.00 ±0.20	△	ECR 200609-001	黃科源	2006/09/09	△	依ECR修改產品尺寸	李柏昇	2017/02/06
Erin Chou		α11	.000 ±0.10	△	ECR 200804-007	黃科源	2008/04/09	△	新增白色選項	Eddie	2018/11/22
DRAWN BY	DATE	SIZE	ANGLE	△	ECR 200810-009	黃科源	2008/10/22	CUSTOMER			
Eddie	2018/11/22	A4	0° ±1°	△	ECR 200910-003	黃科源	2009/10/12				
			.0° ±	△	ECR 201012-011 修改圖面尺寸	吳沛倫	2010/12/23				
3.00mm Dip Double-Row Wire to Board Power Connector Series			SHEET	1/1	△	環境溫度變更-40°C to 105°C	劉怡萱	2011/02/09	Conforms to The RoHS Instruction		

PART NO JS-3025-XXX

3.00mm Dip Double-Row Wire to Board Power Connector Series



### ■ SPECIFICATIONS

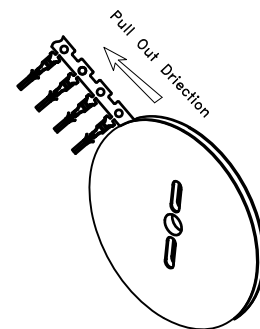
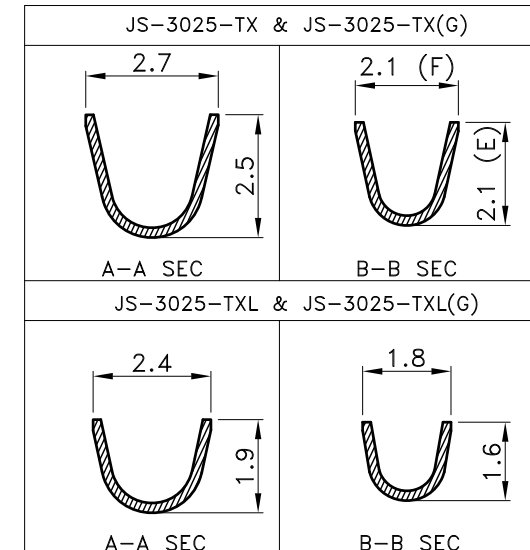
- Current rating : 5A AC/DC
- Withstanding voltage : 1,500V AC/minute
- Insulation resistance : 1,000M $\Omega$  min. initial
- Temperature range : - 40 $^{\circ}$ C to + 85 $^{\circ}$ C
- Contact resistance : 20m $\Omega$  max.

### ■ TERMINAL

- Part No. : JS-3025-T X (X) (X)

① ② ③

- ① Process  
Blank :Plating before Stamp  
P: Stamping before Plated
- ② Crimp Angle  
Blank : High Crimp  
L : Low Crimp
- ③ Plated  
Blank :120u' min.TIN over 30u' min.NICKEL  
G : 0.8u' min. AU over 30u' min. NICKEL.
- Applicable Wire :  
1. High Crimp : AWG #20~24  
2. Low Crimp : AWG #26~30
- Material : Phos. Bronze
- Plated : Reference to the said options
- Q' ty : 10,000 pcs./Reel



**喬訊電子工業股份有限公司**  
**CHYAO SHIUNN**  
**ELECTRONIC INDUSTRIAL LTD.**

**PART NO JS-3025-TX**  
**3.00mm Power Connector, Crimp Terminal**

APPROVED BY	SCALE	UNIT	TOLERANCE	LTR	REVISION RECORD	NAME	DATE	LTR	REVISION RECORD	NAME	DATE
張育瑞		mm	.0 ±0.30	△	ECR 201012 005 修改圖面尺寸 併圖	吳沛倫	2010/12/22				
CHECKED BY	PROJ	VER NO.	.00 ±0.20	△	增加鍍金區域, 測點及電鍍規格	黃廣珍	2013/08/20				
劉娜	◎	a5	.000 ±0.10	△	增加端子捲繞方向圖	吳弘文	2014/10/23				
DRAWN BY	DATE	SIZE	ANGLE		按實物修改料帶形狀及變更尺寸管控	吳小平	2015/07/07	CUSTOMER		Conforms to The RoHS Instruction	
謝君	2022/08/05	A4	0° ±1°	△	增加先沖后鍍選項	謝君	2022/08/05				
			0° ±	△							
			SHEET	1/1							