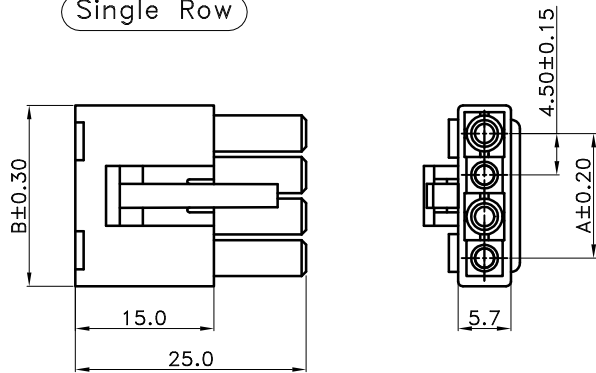


Single Row



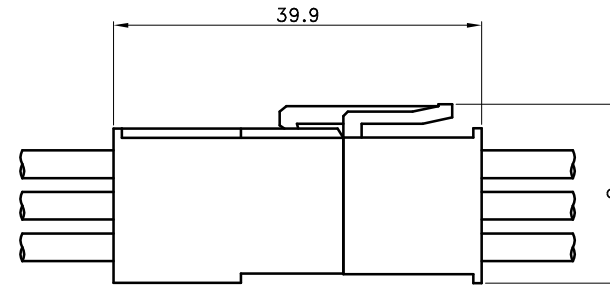
Poles	Dimensions	
	A	B
02	—	10.50
03	9.00	15.00
04	13.50	19.60

■ SPECIFICATIONS

- Current Rating :
 1. Max. Value : 10 A
(With UL1007 AWG #16 on 2P)
 2. Min. Value : 2 A
(With UL1007 AWG #26 on 15P)
- Withstanding Voltage : 1,500V AC/minute
- Insulation Resistance : 1,000MΩ min
- Temperature Range : -25 °C to + 90°C
- Contact Resistance : 20mΩ max

■ PLUG

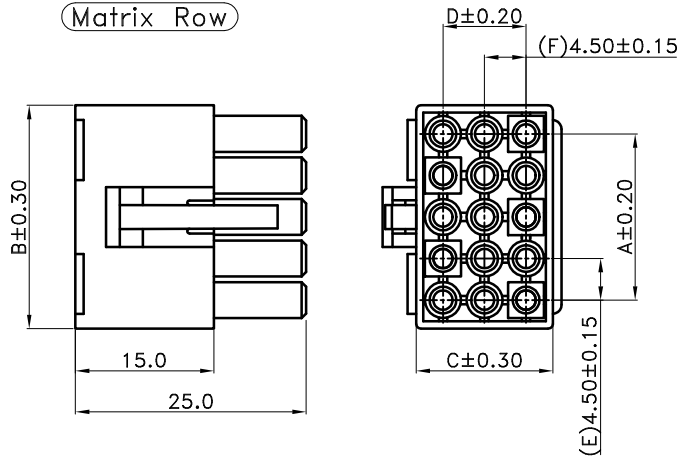
- Part No. : JS-2313-XX
- Poles :
 1. Single Row : 02~04
 2. Matrix Row : 2x2, 06, 09, 12, 15
- Material : Nylon66 UL94V-0
- Mate Part :
 1. Receptacle : JS-2413-XX (Free-Hanging Type)
 2. Receptacle : JS-2413-XXE (Panel Mount Type)
 3. Terminal : JS-23131BS-2X
- Packing : Bag



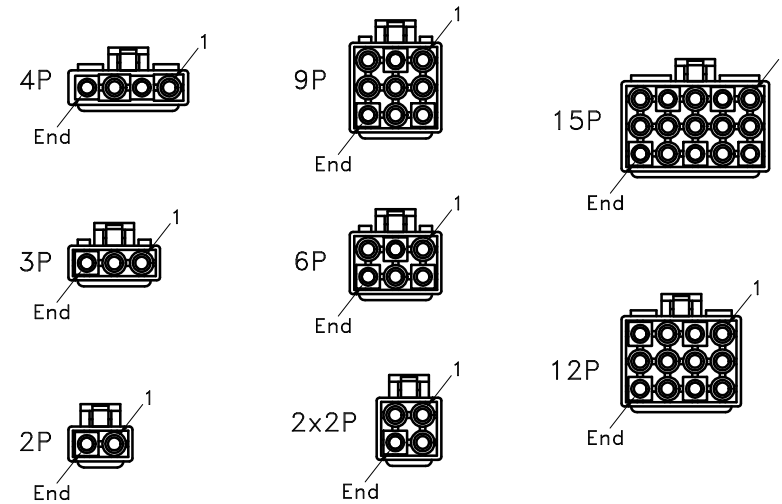
Poles	G
02~04	10.4
2x2	15.2
06	14.9
09,12,15	19.4

Assembled Dimension

Matrix Row



Poles	Dimensions				④
	A	B	C	D	
2x2	4.50	10.60	10.20	4.5	④
06	9.00	15.00	10.20	9.0	
09	9.00	15.00	14.70	9.0	④
12	13.50	19.60	14.80	9.0	
15	18.00	24.20	14.80	9.0	



Locations of Circuit ②



喬訊電子工業股份有限公司
CHYAO SHIUNN
ELECTRONIC INDUSTRIAL LTD.

PART NO JS-2313-XX

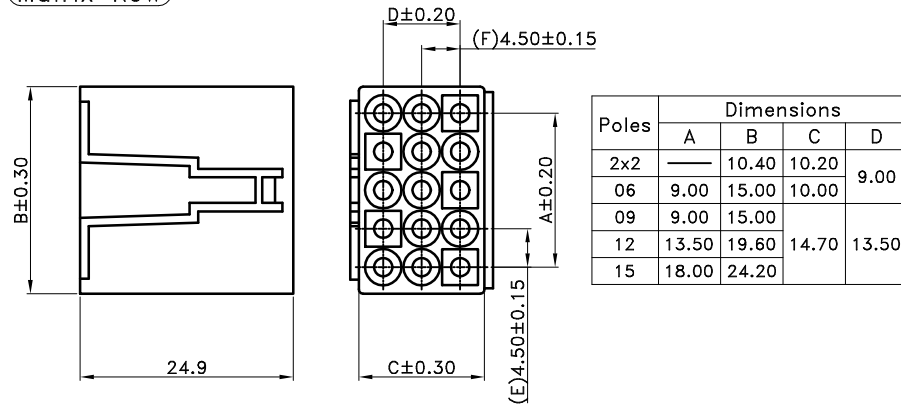
4.50mm Wire to Wire Power Connector

APPROVED BY	SCALE	UNIT	TOLERANCE	LTR	REVISION RECORD	NAME	DATE	LTR	REVISION RECORD	NAME	DATE
Tom Shih		mm	.0 ±0.30	①	圖面原因遺失	余秀麗	2005/05/15	①			
CHECKED BY	PROJ	VER NO.	.00 ±0.20	②	產品Pin 1位置修正	王誠賢	2011/09/20	②			
Eddie	③	α4	.000 ±0.10	③	D尺寸修正	吳弘文	2015/07/17	③			
DRAWN BY	DATE	SIZE	ANGLE	④	add poles 02 Dim.A	Erin	2019/01/25	④			
Erin	2019/01/25	A4	0° ±1°	⑤				⑤			
			.0° ±	⑥				⑥			
			SHEET 1/1	⑦				⑦			

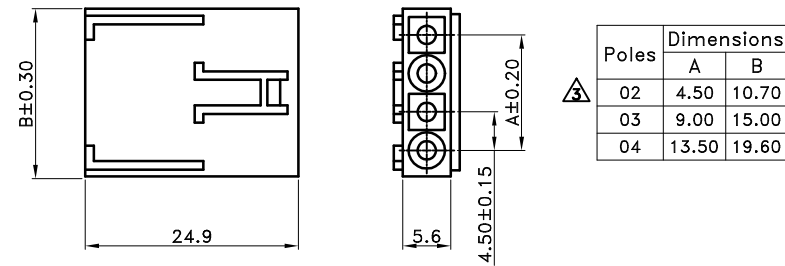
CUSTOMER

Conforms to The RoHS Instruction

Matrix Row



Single Row

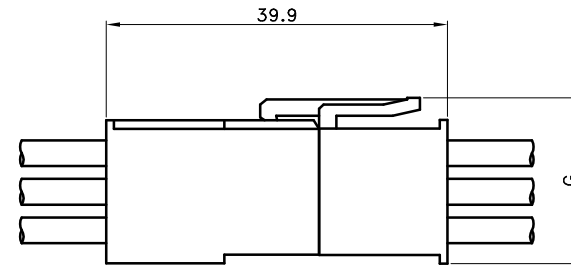


SPECIFICATIONS

- Current Rating :
 1. Max. Value : 10 A
(With UL1007 AWG #16 on 2P)
 2. Min. Value : 2 A
(With UL1007 AWG #26 on 15P)
- Withstanding Voltage : 1,500V AC/minute
- Insulation Resistance : 1,000MΩ min
- Temperature Range : -25 °C to + 90°C
- Contact Resistance : 20mΩ max

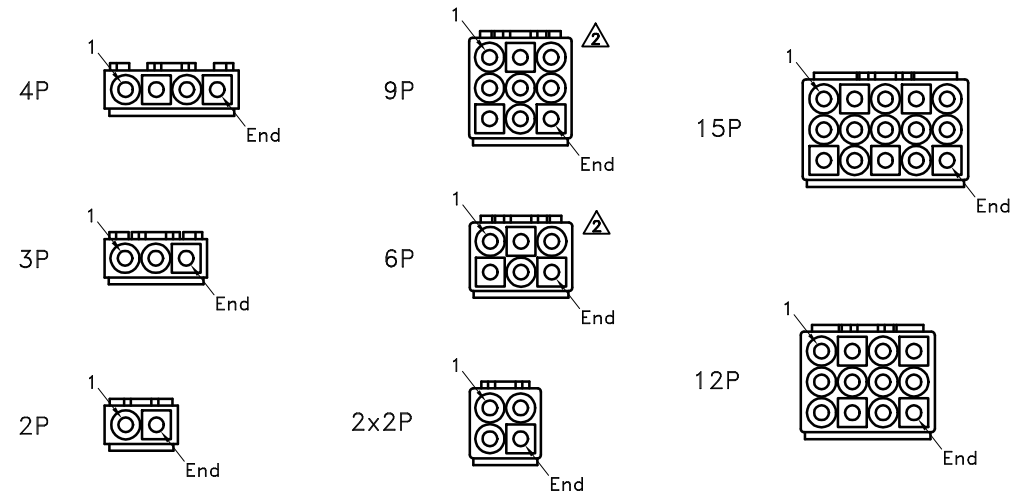
RECEPTACLE (Free-Hanging Type)

- Part No. : JS-2413-XX
- Poles :
 1. Single Row : 02~04
 2. Matrix Row : 2x2, 06, 09, 12, 15
- Material : Nylon66 UL94V-0
- Mate Part :
 1. Plug : JS-2313-XX
 2. Terminal : JS-24131BS-2X
- Packing : Bag



Poles	G
02~04	10.4
2x2	15.2
06	14.9
09,12,15	19.4

Assembled Dimension



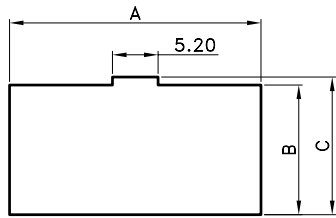
Locations of Circuit



喬訊電子工業股份有限公司
CHYAO SHIUNN
ELECTRONIC INDUSTRIAL LTD.

APPROVED BY	SCALE	UNIT	TOLERANCE	LTR	REVISION RECORD	NAME	DATE	LTR	REVISION RECORD	NAME	DATE
Tom Shih		mm	.0 ±0.30	▲	圖面原因遺失	余秀麗	2005/05/15	▲			
CHECKED BY	PROJ	VER NO.	.00 ±0.20	▲	6P & 9P示意圖錯誤訂正	王誠賢	2011/08/05	▲			
Eddie	⊕	a3	.000 ±0.10	▲	add Poles 02 Dim. A	Erin	2019/01/25	▲			
DRAWN BY	DATE	SIZE	ANGLE						CUSTOMER		
Erin	2019/01/25	A4	0° ±1°	▲					Conforms to The RoHS Instruction		
			0° ±	▲							
			SHEET	1/1	▲						

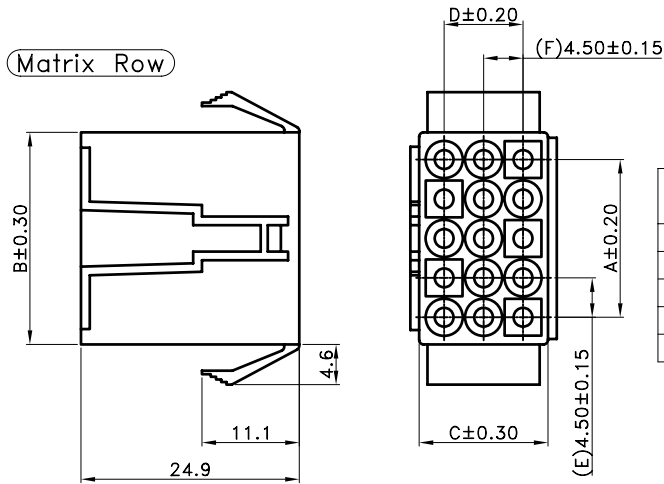
PART NO JS-2413-XX
4.50mm Wire to Wire Power Connector, W/O Ear



Poles	Dimensions		
	A	B	C
02	15.00	6.00	6.85
03	19.70		
04	24.20		
2x2	15.60	10.60	11.60
06	19.70	10.20	11.10
09	19.70	14.80	15.70
12	24.20		
15	28.70		

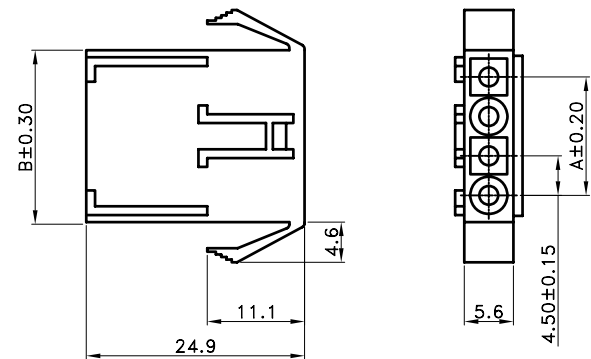
PANEL CUTOUT Dimension(Refer)

Matrix Row



Poles	Dimensions			
	A	B	C	D
2x2	—	10.40	10.20	—
06	9.00	15.00	10.00	—
09	9.00	15.00	—	—
12	13.50	19.60	14.70	9.00
15	18.00	24.20	—	—

Single Row



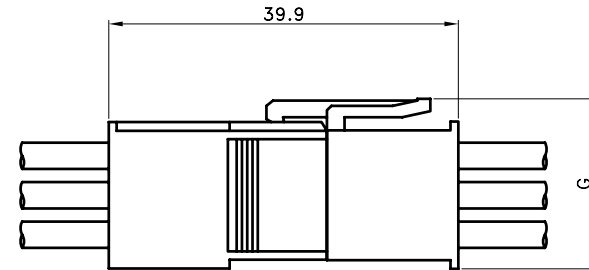
Poles	Dimensions	
	A	B
02	—	10.70
03	9.00	15.00
04	13.50	19.60

■ SPECIFICATIONS

- Current Rating :
 1. Max. Value : 10 A
(With UL1007 AWG #16 on 2P)
 2. Min. Value : 2 A
(With UL1007 AWG #26 on 15P)
- Withstanding Voltage : 1,500V AC/minute
- Insulation Resistance : 1,000MΩ min
- Temperature Range : -25 °C to + 90°C
- Contact Resistance : 20mΩ max

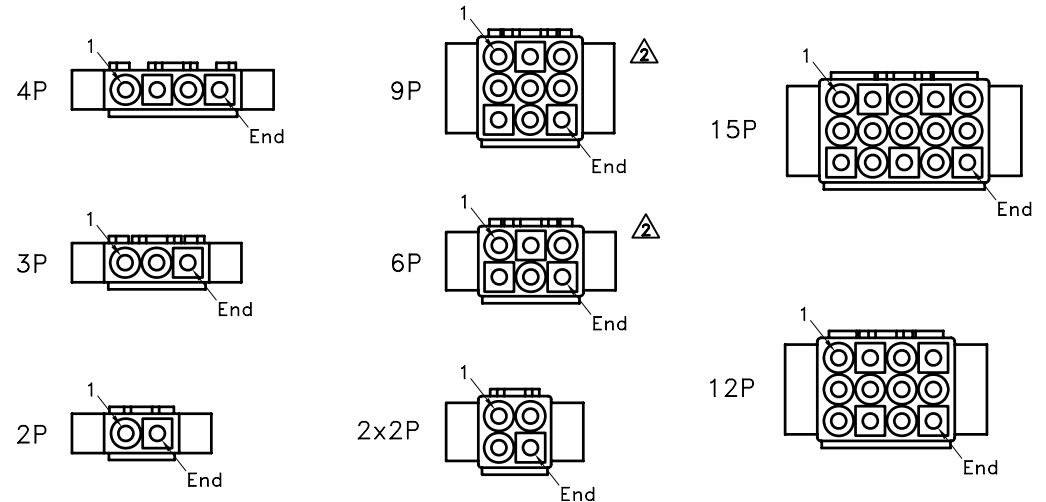
■ RECEPTACLE (Panel Mount Type)

- Part No. : JS-2413-XXE
- Poles :
 1. Single Row : 02~04
 2. Matrix Row : 2x2, 06, 09, 12, 15
- Material : Nylon66 UL94V-0
- Mate Part :
 1. Plug : JS-2313-XX
 2. Terminal : JS-24131BS-2X
- Packing : Bag



Assembled Dimension

Poles	G
02~04	10.4
2x2	15.2
06	14.9
09,12,15	19.4



Locations of Circuit



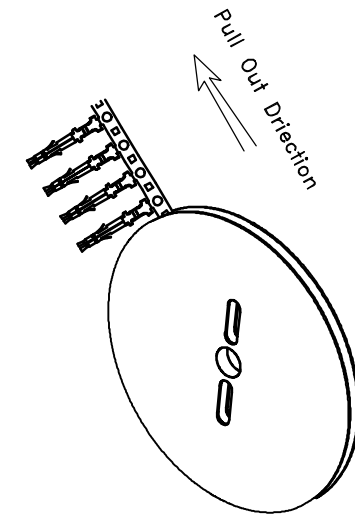
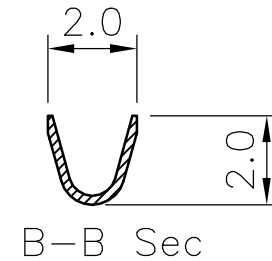
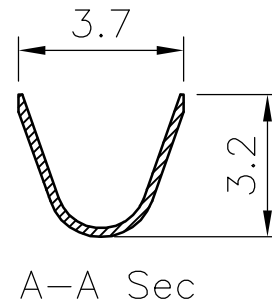
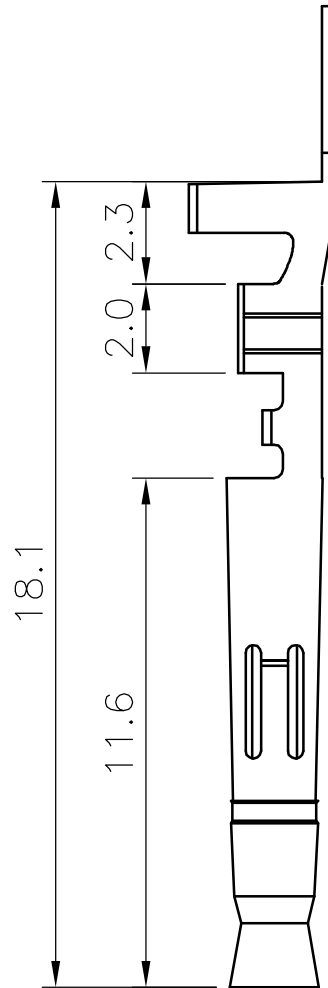
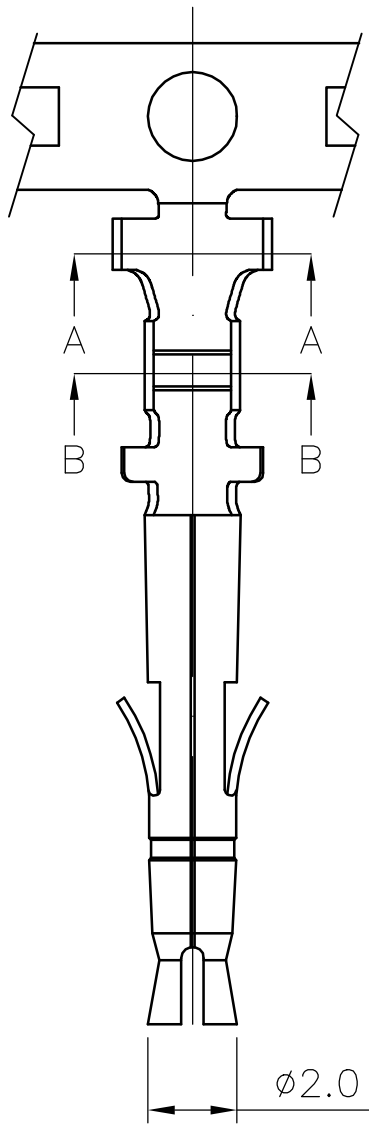
喬訊電子工業股份有限公司

CHYAO SHIUNN
ELECTRONIC INDUSTRIAL LTD.

PART NO JS-2413-XXE

4.50mm Wire to Wire Power Connector, W/ Ear

APPROVED BY	SCALE	UNIT	TOLERANCE	LTR	REVISION RECORD	NAME	DATE	LTR	REVISION RECORD	NAME	DATE
張育瑞		mm	.0 ±0.30	△	圖面原因遺失	余秀麗	2005/05/15	△			
CHECKED BY	PROJ	VER NO.	.00 ±0.20	△	6P & 9P示意圖錯誤訂正	王誠賢	2011/08/05	△			
王瑞雄	⊕ □	a2	.000 ±0.10	△				△			
DRWN BY	DATE	SIZE	ANGLE						CUSTOMER		
王誠賢	2011/08/05	A4	0° ±1°	△					Conforms to The RoHS Instruction		
			.0° ±	△							
			SHEET	1/1	△						



■ SPECIFICATIONS

- Voltage Rating : 300V AC/DC
- Current Rating : 6A AC/DC
- Withstanding Voltage : 1,500V AC/minute
- Insulation Resistance : 1,000M Ω min.
- Temperature Range : - 25°C to + 85°C
- Contact Resistance : 20m Ω max.

■ TERMINAL

- Part No. : JS-23131BS-2
- Applicable Wires : AWG # 20-26
- Material : Brass
- Finish : Tin Plated
- Thickness : 0.2 mm
- Q' ty : 7,000 pcs./Reel



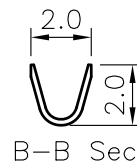
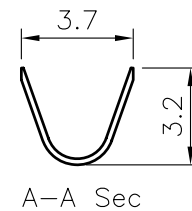
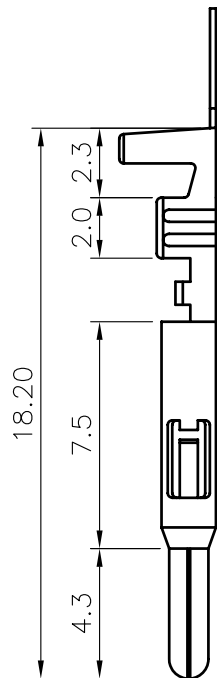
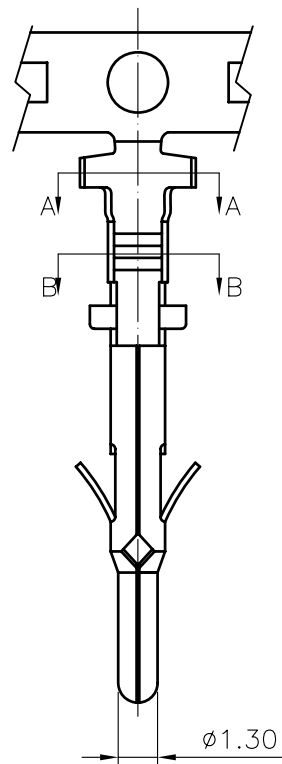
喬訊電子工業股份有限公司

CHYAO SHIUNN
ELECTRONIC INDUSTRIAL LTD.

APPROVED BY	SCALE	UNIT	TOLERANCE	LTR	REVISION RECORD	NAME	DATE	LTR	REVISION RECORD	NAME
張育瑞		mm	.0 ±0.30	△	200608-003	林文彬	2006/08/10	△		
CHECKED BY	PROJ	VER NO.	.00 ±0.20	△	ECR 200706-003	黃科源	2007/06/04	△		
周慈雲	⊕	a3	.000 ±0.10	△	增加端子繞向圖	吳弘文	2014/10/23	△		
DRAWN BY	DATE	SIZE	ANGLE						CUSTOMER	
吳弘文	2014/10/23	A4	0° ±1°	△					Conforms to The RoHS Instruction	
			.0° ±	△						
			SHEET 1/1	△						

PART NO JS-23131BS-2

∅1.3mm Power Connectors Terminal



■ SPECIFICATIONS

- Voltage Rating : 300V AC/DC
- Current Rating : 6A AC/DC
- Withstanding Voltage : 1,500V AC/minute
- Insulation Resistance : 1,000M Ω min
- Temperature Range : -25 °C to + 85°C

■ TERMINAL

- Part No. : JS-24131BS-2
- Applicable Wires : AWG # 20 - 26
- Material : Brass
- Finish : Tin Plated
- Thickness : 0.2mm
- Q' ty : 7,000 pcs./Ree



喬訊電子工業股份有限公司
CHYAO SHIUNN
ELECTRONIC INDUSTRIAL LTD.

PART NO JS-24131BS-2
 $\phi 1.3$ mm Power Connectors Terminal

APPROVED BY	SCALE	UNIT	TOLERANCE	LTR	REVISION RECORD	DATE	LTR	REVISION RECORD	DATE
林陳鏞	1:1	mm	.0 ±0.3	ECR	RoHS compliant	06/04/01			
CHECKED BY	PROJ	VER NO.	.00 ±0.2	ECR	200608-003	06/08/10			
		a2	.000 ±0.1	ECR	200706-002	07/06/04			
DRAWN BY	DATE	SIZE	ALL ±				CUSTOMER		
黃科源	2007/06/04	A4	ANGLE				Conforms to The RoHS Instruction		
			0° ±						
			.0° ±						