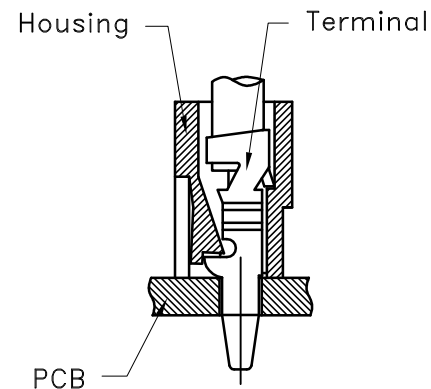
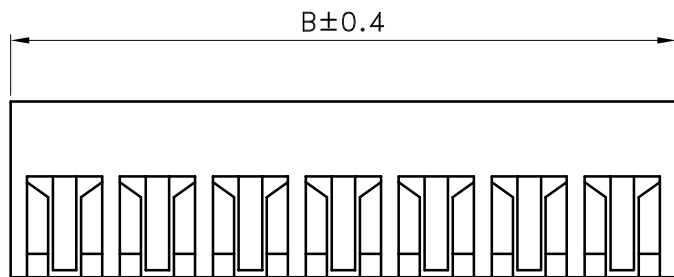
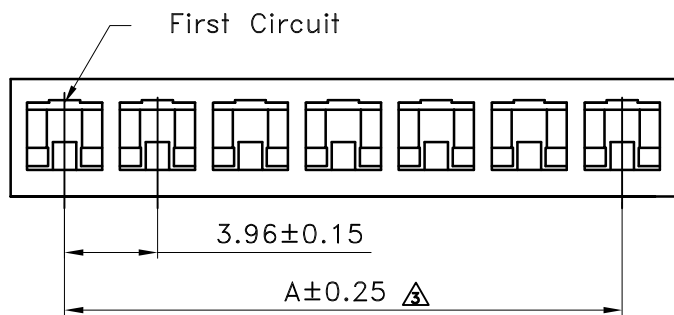
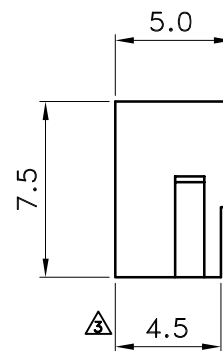


Recommended PCB Layout(Top View)



Mated Drawing (REF.)



■ SPECIFICATIONS

- Current Rating : 7A AC/DC
- ⚠ • Withstanding Voltage : 800V AC/minute
- Insulation Resistance : 1000M Ω min
- Temperature Range : - 25°C to + 85°C
- Contact Resistance(On Crimped Portion) : 10m Ω max

■ HOUSING

- Part No. : JS-4008-XX
- Poles : 2-15(Board in)
- Material : Nylon 66 UL94V-0
- Q' ty : 1000 pcs./Bag



Poles	Dimensions(mm)	
	A	B
2	3.96	8.50
3	7.92	12.46
4	11.88	16.42
5	15.84	20.38
6	19.80	24.34
7	23.76	28.26
8	27.72	32.26
9	31.68	36.22
10	35.64	40.18
11	39.60	44.14
12	43.56	48.10
13	47.00	52.06
14	51.48	56.02
15	55.44	59.98

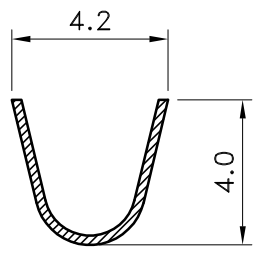
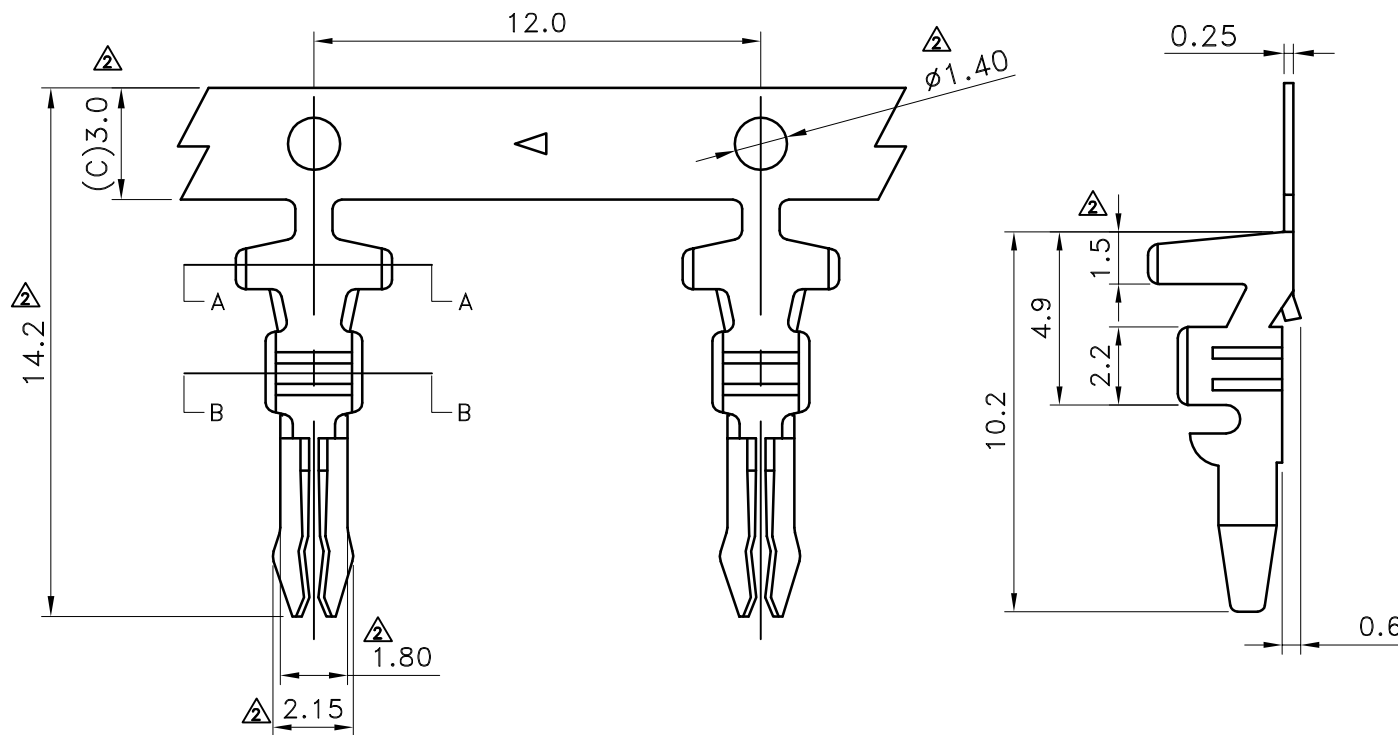


喬訊電子工業股份有限公司  
CHYAO SHIUNN  
ELECTRONIC INDUSTRIAL LTD.

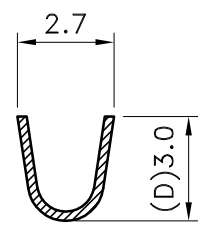
PART NO JS-4008-XX

3.96mm Crimp Style Connectors Housing

APPROVED BY	SCALE	UNIT	TOLERANCE	LTR	REVISION RECORD	NAME	DATE	LTR	REVISION RECORD	NAME	DATE
張育瑞		mm	.0 ±0.30	1	RoHS Compliant	黃科源	06/04/01	1			
CHECKED BY	PROJ	VER NO.	.00 ±0.20	2	200809-008	黃科源	08/10/23	2			
黃科源		a3	.000 ±0.10	3	規格修改&尺寸修改	劉怡萱	11/05/06	3			
DRAWN BY	DATE	SIZE	ANGLE						CUSTOMER		
劉怡萱	2011/05/06	A4	0° ±1°	4					Conforms to The RoHS Instruction		
			.0° ±	5							
			SHEET 1/1	6							



A-A SEC



B-B SEC

■ SPECIFICATIONS

- Current Rating : 7A AC/DC
- Withstanding Voltage : 800V AC/minute
- Insulation Resistance : 1000MΩ min
- Temperature Range : - 25°C to + 85°C
- Contact Resistance(On Crimped Portion) : 10mΩ max

■ TERMINAL

- Part No. : JS-4008-TP
- Applicable Wires : AWG#16~22
- Applicable P.C.B Thickness:1.6mm
- Applicable P.C.B Hold Dia:  $\phi 1.8\pm 0.05$

- Material : Brass
- Finish : Stamping Before Tin Plated
- Thickness : 0.25 mm
- Q' ty : 4500 pcs./Reel

喬訊電子工業股份有限公司  
CHYAO SHIUNN  
ELECTRONIC INDUSTRIAL LTD.

APPROVED BY	SCALE	UNIT	TOLERANCE	LTR	REVISION RECORD	NAME	DATE	LTR	REVISION RECORD	NAME	DATE
張育瑞		mm	.0 ±0.30	△	200809-008	黃科源	08/10/23	△			
CHECKED BY	PROJ	VER NO.	.00 ±0.20	△	供應商圖面尺寸修改	劉怡萱	11/05/16	△			
黃科源		a2	.000 ±0.10	△				10			
DRAWN BY	DATE	SIZE	ANGLE	△					CUSTOMER		
劉怡萱	2011/05/06	A4	0° ±1°	△					Conforms to The RoHS Instruction		
			.0° ±	△							
			SHEET	1/1	△						

PART NO JS-4008-TP

3.96mm Crimp Style Connectors Terminal