

■ SPECIFICATIONS

- Current Rating : 2A AC/DC
- Withstanding Voltage : 800V AC/minute
- Insulation Resistance : 1000M Ω min
- Temperature Range : - 25 $^{\circ}$ C to + 85 $^{\circ}$ C
- Contact Resistance(On Crimped Portion) : 10m Ω max

■ HOUSING

- Part No. : JS-1130-XX
- Poles : 2-16(Board in ; Straight)
- Material : Nylon 66 UL94-V0
- Q' ty : 1,000 pcs./Bag

Poles	Part No.	Dimensions(mm)	
		A	B
2	JS-1130-02	2.00	5.20
3	JS-1130-03	4.00	7.20
4	JS-1130-04	6.00	9.20
5	JS-1130-05	8.00	11.20
6	JS-1130-06	10.00	13.20
7	JS-1130-07	12.00	15.20
8	JS-1130-08	14.00	17.20
9	JS-1130-09	16.00	19.20
10	JS-1130-10	18.00	21.20
11	JS-1130-11	20.00	23.20
12	JS-1130-12	22.00	25.20
13	JS-1130-13	24.00	27.20
14	JS-1130-14	26.00	29.20
15	JS-1130-15	28.00	31.20
16	JS-1130-16	30.00	33.20



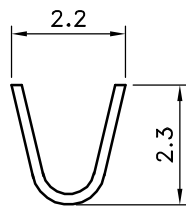
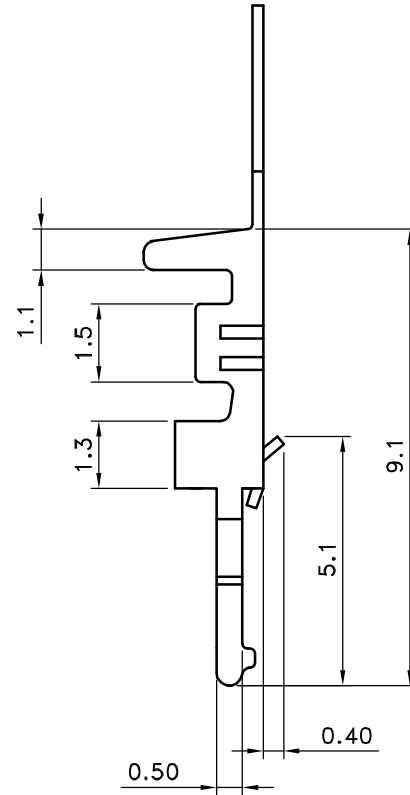
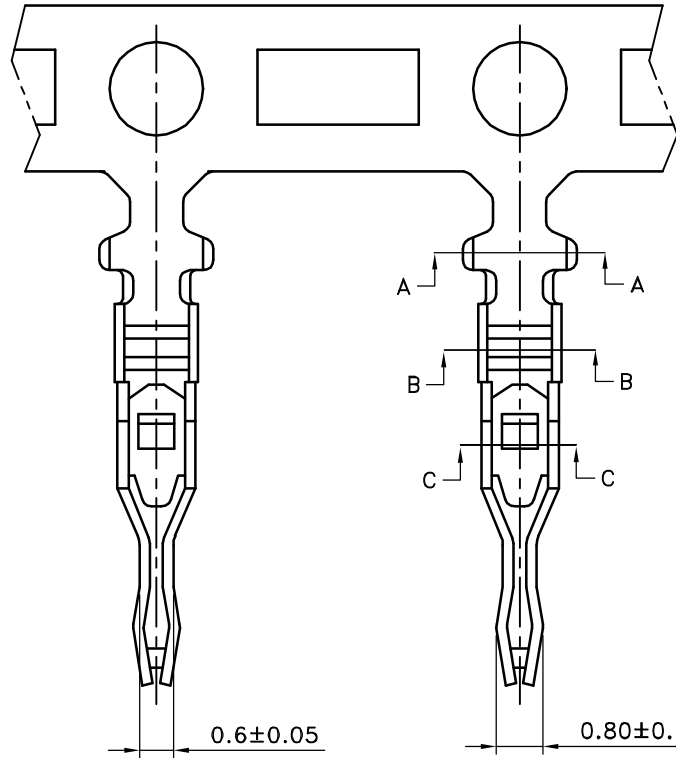
喬訊電子工業股份有限公司

CHYAO SHIUNN
ELECTRONIC INDUSTRIAL LTD.

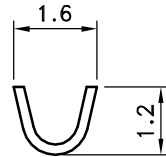
APPROVED BY	SCALE	UNIT	TOLERANCE	LTR	REVISION RECORD	NAME	DATE	LTR	REVISION RECORD	NAME	DATE
張育瑞		mm	.0 ±0.30	△	ECR RoHS Compliant	余秀麗	06/04/01	△			
CHECKED BY	PROJ	VER NO.	.00 ±0.20	△	ECR DG 200601-004	XXX	06/01/12	△			
周家慶	⊕	a6	.000 ±0.10	△	ECR DG 200606-001	劉蓮花	06/06/01	△			
DRAWN BY	DATE	SIZE	ANGLE	△	ECR 200810-006	黃科源	08/10/08		CUSTOMER		
劉娜	2017/09/22	A4	0° ±1°	△	ECR 201102-002	林豐盛	11/02/11				
			.0° ±	△	增加視圖, 區分1130R量測	劉娜	17/09/22				
			SHEET 1/1	△							Conforms to The RoHS Instruction

PART NO JS-1130-XX

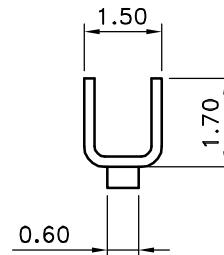
2.00mm Crimp Style Connectors



A-A SEC



B-B SEC



C-C SEC

■ SPECIFICATIONS

- Voltage Rating : 250V AC/DC
- Current Rating : 2A AC/DC
- Withstanding Voltage : 800V AC/minute
- Insulation Resistance : 1000MΩ min
- Temperature Range : - 25°C to + 85°C
- Contact Resistance(On Crimped Portion) : 10mΩ max

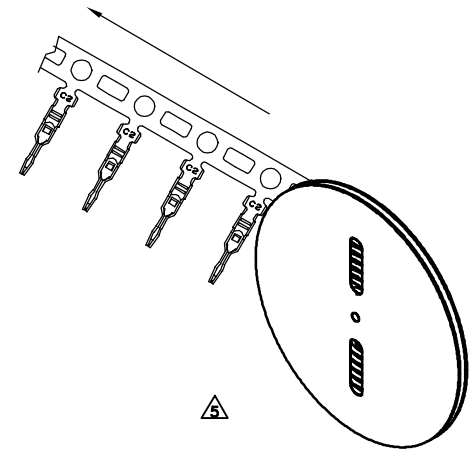
■ TERMINAL

- Part No. : JS-1130-TX

①

⚠ ① Blank : Stamping after Tin Plated
P : Stamping Before Tin Plated

- Applicable Wires : AWG# 24-30
- Material : Brass
- Finish : Tin Plated
- Thickness : 0.2mm
- Q' ty : 10000 pcs./Reel

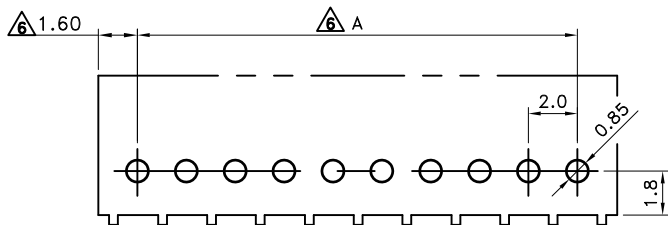


喬訊電子工業股份有限公司

CHYAO SHIUNN
ELECTRONIC INDUSTRIAL LTD.

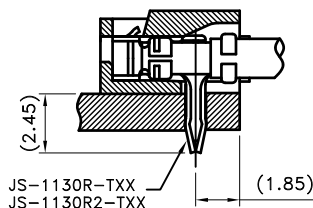
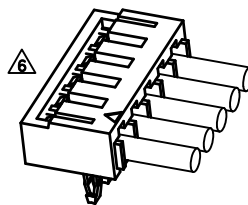
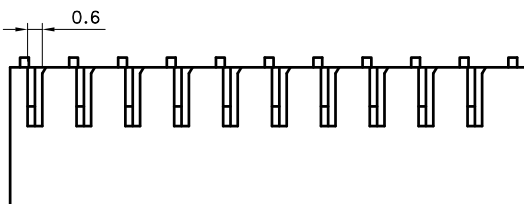
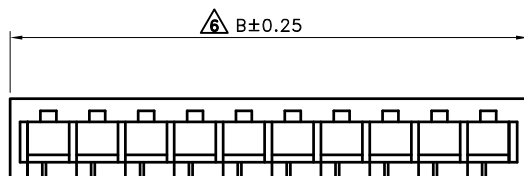
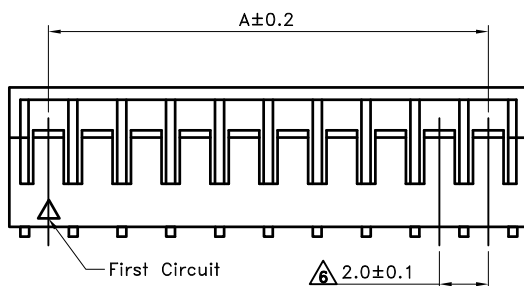
APPROVED BY	SCALE	UNIT	TOLERANCE	LTR	REVISION RECORD	NAME	DATE	LTR	REVISION RECORD	NAME	DATE
Tom Shih		mm	.0 ±0.30	⚠	ECRDG200601-002	吳弘文	2006/01/04	⚠			
CHECKED BY	PROJ	VER NO.	.00 ±0.20	⚠	ECRDG200604-011	吳弘文	2006/04/27	⚠			
Erin Chou	⊕	a6	.000 ±0.10	⚠	ECRDG200606-001	吳弘文	2006/06/01	⚠			
DRAWN BY	DATE	SIZE	ANGLE	⚠	ECR200812-014	吳弘文	2008/12/15	⚠	CUSTOMER		
Eddie	2022/05/30	A4	0° ±1°	⚠	增加捲繞方向圖	吳弘文	2014/10/17	⚠			
			.0° ±	⚠	修正規格敘述	Eddie	2022/05/30	⚠	Conforms to The RoHS Instruction		
			SHEET 1/1	⚠							

PART NO JS-1130-TX
2.00mm BOARD IN CONN, TERMINAL

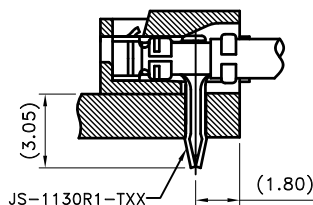


Recommended PCB Layout

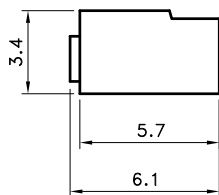
General tolerance ±0.05



Mated Drawing <1> (REF.)



Mated Drawing <2> (REF.)



■ SPECIFICATIONS

- Current Rating : 2A AC/DC
- Withstanding Voltage : 800V AC/minute
- Insulation Resistance : 1000MΩ min
- Temperature Range : - 25°C to + 85°C
- Contact Resistance(On Crimped Portion) : 10mΩ max

■ HOUSING

- Part No. : JS-1130R-XX
- Poles : 2-16(Board in ; Right Angle)
- Material : Nylon 66 UL94-V0
- Q' ty : 1,000 pcs./Bag

Poles	Part No.	Dimensions(mm)	
		A	B
2	JS-1130R-02	2.00	5.20
3	JS-1130R-03	4.00	7.20
4	JS-1130R-04	6.00	9.20
5	JS-1130R-05	8.00	11.20
6	JS-1130R-06	10.00	13.20
7	JS-1130R-07	12.00	15.20
8	JS-1130R-08	14.00	17.20
9	JS-1130R-09	16.00	19.20
10	JS-1130R-10	18.00	21.20
11	JS-1130R-11	20.00	23.20
12	JS-1130R-12	22.00	25.20
13	JS-1130R-13	24.00	27.20
14	JS-1130R-14	26.00	29.20
15	JS-1130R-15	28.00	31.20
16	JS-1130R-16	30.00	33.20



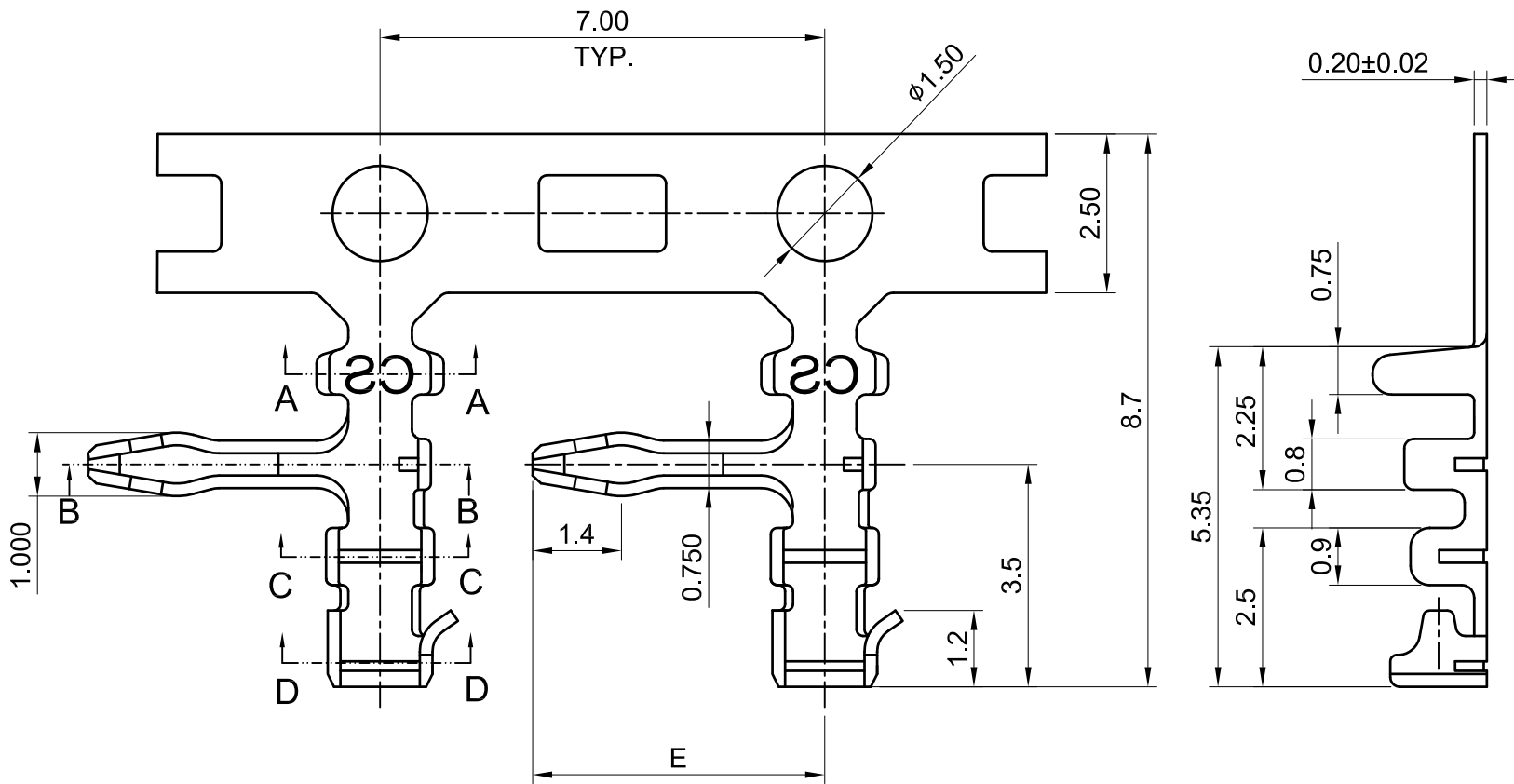
喬訊電子工業股份有限公司

CHYAO SHIUNN
ELECTRONIC INDUSTRIAL LTD.

PART NO JS-1130R-XX

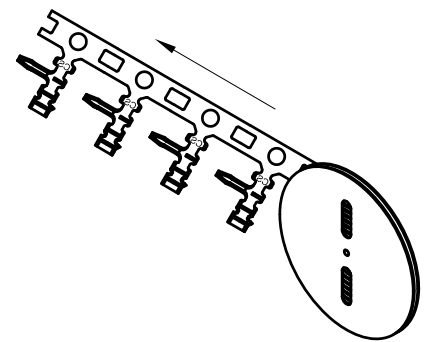
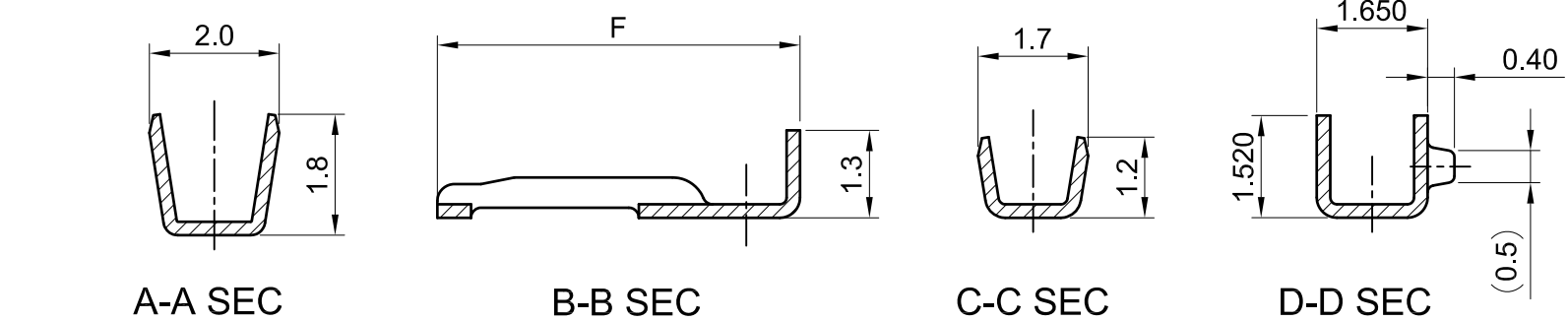
2.00mm Crimp Style Connectors

APPROVED BY	SCALE	UNIT	TOLERANCE	LTR	REVISION RECORD	NAME	DATE	LTR	REVISION RECORD	NAME	DATE
施咸光		mm	.0 ±0.30	△	ECR RoHS Compliant	XXX	06/04/01	△			
CHECKED BY	PROJ	VER NO.	.00 ±0.20	△	ECR DG 200503-004	余秀麗	05/03/08	△			
張育瑞	⊕ □	a7	.000 ±0.10	△	ECR DG 200601-004	XXX	06/01/12	△			
DRAWN BY	DATE	SIZE	ANGLE		ECR DG 200606-002	劉蓮花	06/06/03		CUSTOMER		
曾慶根	2020.7.17	A4	0° ±1°	△	ECR 200810-006	黃科源	08/10/08				
			0° ±	△	ECR 201102-004	林豐盛	11/02/11		Conforms to The RoHS Instruction		
			SHEET	1/1	修正組合圖示及尺寸	曾慶根	2020.7.17				



- SPECIFICATIONS**
- Current Rating : 2A AC/DC
 - Withstanding Voltage : 800V AC/minute
 - Insulation Resistance : 1000MΩ min
 - Temperature Range : - 25°C to + 85°C

- TERMINAL**
- Part No. : JS-1130RX-XXTX
 - ① R1 : Size: E=4.60; F=5.40
 - R2 : Size: E=3.95; F=4.75
 - ② Material :
 - Blank : Brass
 - PB : Phos. Bronze
 - ③ Stamping:
 - Blank : Stamping after Plated
 - P : Stamping before Plated
 - Applicable Wires : AWG# 24-30
 - Finish : Tin Plated
 - Thickness : 0.2mm
 - PCB. Thikness : 0.8 - 1.6 mm



 喬訊電子工業股份有限公司
CHYAO SHIUNN
ELECTRONIC INDUSTRIAL LTD.

PART NO JS-1130RX-XXTX
2.00mm BOARD IN CONN, TERMINAL

APPROVED BY	SCALE	UNIT	TOLERANCE	LTR	REVISION RECORD	NAME	DATE	LTR	REVISION RECORD	NAME	DATE
張育瑞		mm	.0 ±0.30	△				△			
CHECKED BY	PROJ	VER NO.	.00 ±0.20	△				△			
周家慶		a0	.000 ±0.10	△				△			
DRAWN BY	DATE	SIZE	ANGLE						CUSTOMER		
曾慶根	2017/04/27	A4	0° ±1°	△					Conforms to The RoHS Instruction		
			0° ±	△							
			SHEET	1/1	△						