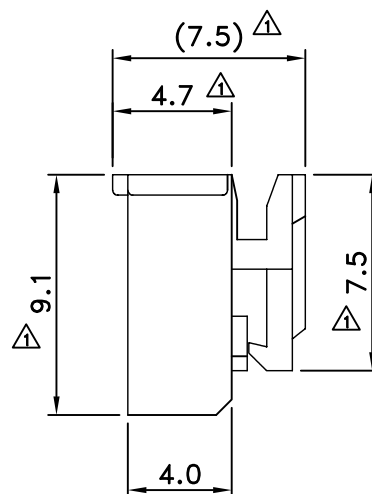
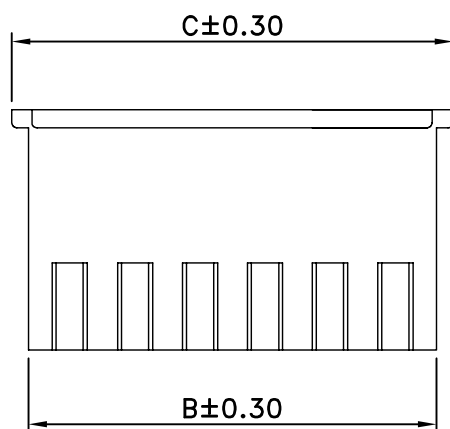


2P



■ SPECIFICATIONS

- Voltage Rating : 250V AC/DC
- Current Rating : 3A AC/DC
- Withstanding Voltage : 1,000V AC/minute
- Insulation Resistance : 1,000MΩ min
- Temperature Range : - 25°C to + 85°C
- Contact Resistance : 20mΩ max.

■ HOUSING

- Part No. : JS-20012-XX HK

① Poles : 2-20 ① ②

② HK : 產品有外卡勾

- Material : Nylon 66 UL94V-0, Natural color
- Use With: JS-20012-TXX Terminal
- Use With: JS-10012-XXHK Wafer

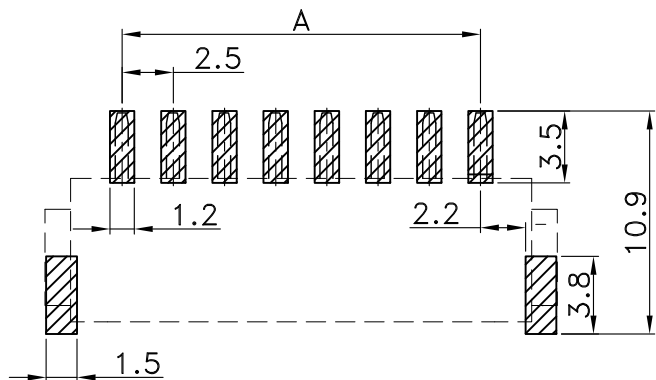
Poles	Dimensions (mm)		
	A	B	C Δ
2	2.50	5.70	7.50
3	5.00	8.20	10.0
4	7.50	10.70	12.50
5	10.00	13.20	15.00
6	12.50	15.70	17.50
7	15.00	18.20	20.00
8	17.50	20.70	22.50
9	20.00	23.20	25.00
10	22.50	25.70	27.50
11	25.00	28.20	30.00
12	27.50	30.70	32.50
13	30.00	33.20	35.00
14	32.50	35.70	37.50
15	35.00	38.20	40.00
16	37.50	40.70	42.50
17	40.00	43.20	45.00
18	42.50	45.70	47.50
19	45.00	48.20	50.00
20	47.50	50.70	52.50



喬訊電子工業股份有限公司
CHYAO SHIUNN
ELECTRONIC INDUSTRIAL LTD.

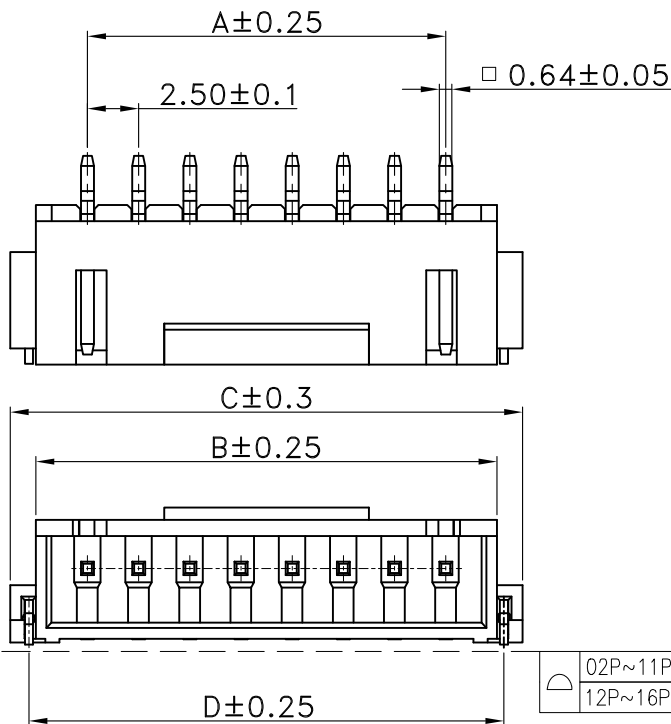
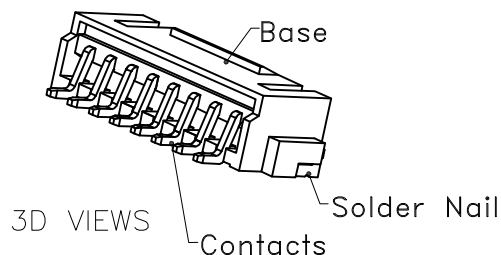
PART NO JS-20012-XXHK
2.50mm Crimp Style Connectors Housing

APPROVED BY	SCALE	UNIT	TOLERANCE	LTR	REVISION RECORD	NAME	DATE	LTR	REVISION RECORD	NAME	DATE
張育瑞		mm	.0 ±0.30	Δ	增加及修改尺寸	曾慶根	2022.6.21	Δ			
CHECKED BY	PROJ	VER NO.	.00 ±0.20	Δ				Δ			
劉娜	\oplus \square	a1	.000 ±0.10	Δ				Δ			
DRAWN BY	DATE	SIZE	ANGLE	Δ					CUSTOMER		
曾慶根	2021/03/09	A4	0° ±1°	Δ					Conforms to The RoHS Instruction		
			.0° ±	Δ							
			SHEET 1/1	Δ							

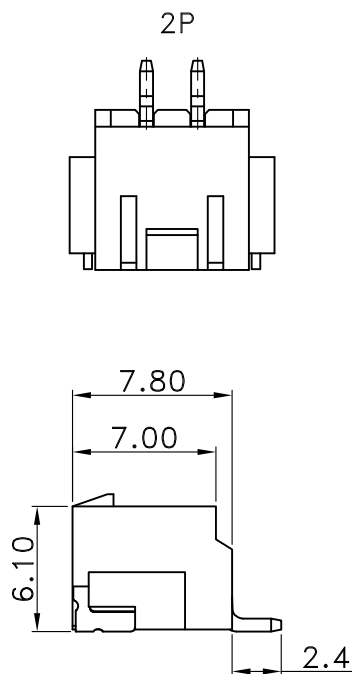


Recommended PCB Layout

General Tolerance ± 0.05



D	02P~11P	0.10	MAX
	12P~16P	0.12	MAX



■ SPECIFICATIONS

- Voltage Rating : 250V AC/DC
- Current Rating : 3A AC/DC
- Withstanding Voltage : 1000V AC/minute
- Insulation Resistance : 1000M Ω min.
- Temperature Range : -25 $^{\circ}$ C to +85 $^{\circ}$ C
- Contact Resistance : 20m Ω max.

■ WAFER

- Part No. : JS-1001H2-XX (HK)
- Product Code: ① ②
- ① Poles:02~16
- ② HK :Clip
- Material : Contact : Brass Tin Plated
Base : LCP UL94V-0, Colour: Natural
Solder Nail : Brass Tin Plated
- Packing : Tape & Reel
- Mating Housing : JS-20012-XX (HK)
- Mating Terminal : JS-20012-T

Poles	Dimensions (mm)			
	A	B	C	D
2	2.50	7.50	10.00	8.20
3	5.00	10.00	12.50	10.70
4	7.50	12.50	15.00	13.20
5	10.00	15.00	17.50	15.70
6	12.50	17.50	20.00	18.20
7	15.00	20.00	22.50	20.70
8	17.50	22.50	25.00	23.20
9	20.00	25.00	27.50	25.70
10	22.50	27.50	30.00	28.20
11	25.00	30.00	32.50	30.70
12	27.50	32.50	35.00	33.20
13	30.00	35.00	37.50	35.70
14	32.50	37.50	40.00	38.20
15	35.00	40.00	42.50	40.70
16	37.50	42.50	45.00	43.20

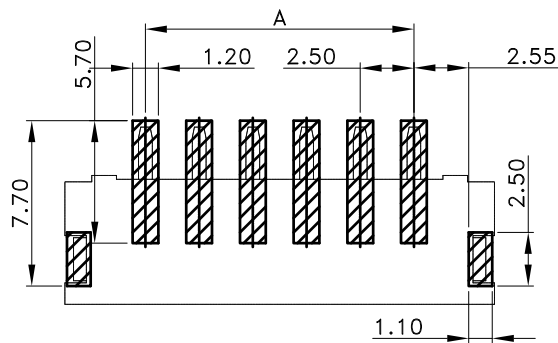


喬訊電子工業股份有限公司
CHYAO SHIUNN
ELECTRONIC INDUSTRIAL LTD.

PART NO JS-1001H2-XX(HK)

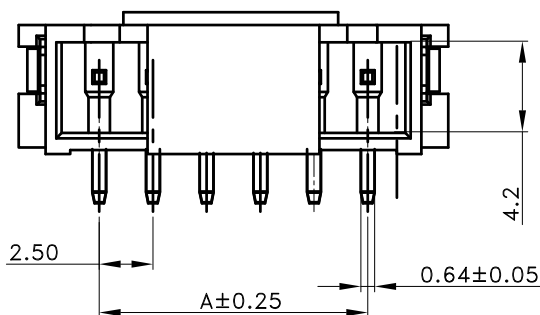
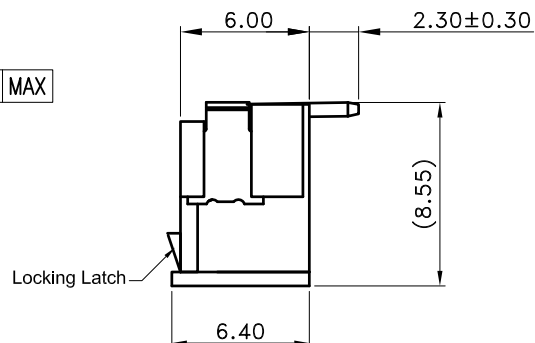
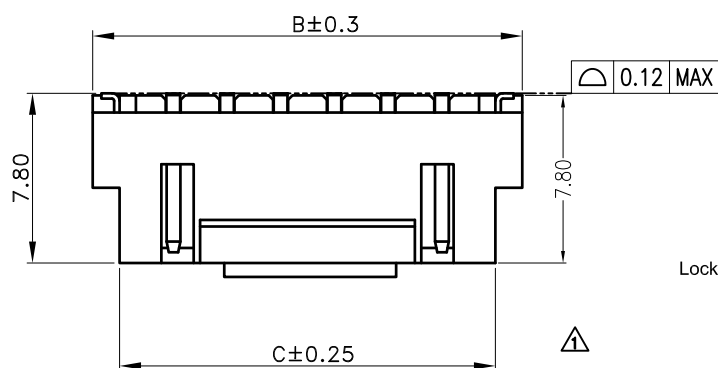
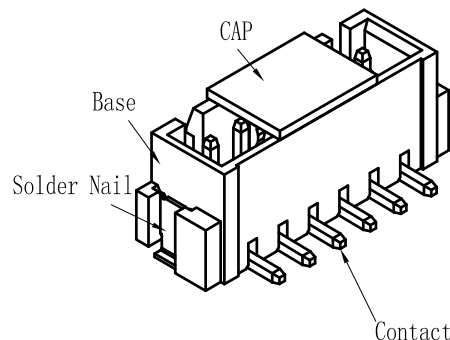
2.50mm Crimp Style Connectors Wafer(SMT)

APPROVED BY	SCALE	UNIT	TOLERANCE	LTR	REVISION RECORD	NAME	DATE	LTR	REVISION RECORD	NAME	DATE
張育瑞		mm	.0 ± 0.30	△				△			
CHECKED BY	PROJ	VER NO.	.00 ± 0.20	△				△			
劉娜	⊕	a0	.000 ± 0.10	△				△			
DRAWN BY	DATE	SIZE	ANGLE						CUSTOMER		
謝君	2021/08/13	A4	0° $\pm 1^{\circ}$	△				△			
			.0° \pm	△				△			
			SHEET 1/1	△				△	Conforms to The RoHS Instruction		



Recommended PCB Layout

General tolerance ± 0.05



SPECIFICATIONS

- Voltage Rating : 250V AC/DC
- Current Rating : 3A AC/DC
- Withstanding Voltage : 1000V AC/minute
- Insulation Resistance : 1000M Ω min.
- Temperature Range : -25 $^{\circ}$ C to +105 $^{\circ}$ C
- Contact Resistance : 20m Ω max.

WAFER

• Part No. : JS-1001V2-XX HK

Product Code: ①

①Poles:02~16

HK : With Locking Latch

- Material : 1. Contact : Brass, Tin plated
2. Base : LCP UL94 V-0, Colour : Natural
3. Solder Nail : Phosphor bronze, Tin plated
4. Base : LCP UL94 V-0, Colour : Natural
- Packing : Tape & Reel

Circuit	Dimensions(mm)		
	A	B	C
02	2.50	10.00	7.50
03	5.00	12.50	10.00
04	7.50	15.00	12.50
05	10.00	17.50	15.00
06	12.50	20.00	17.50
07	15.00	22.50	20.00
08	17.50	25.00	22.50
09	20.00	27.50	25.00
10	22.50	30.00	27.50
11	25.00	32.50	30.00
12	27.50	35.00	32.50
13	30.00	37.50	35.00
14	32.50	40.00	37.50
15	35.00	42.50	40.00
16	37.50	45.00	42.50



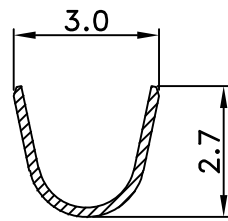
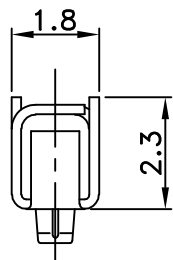
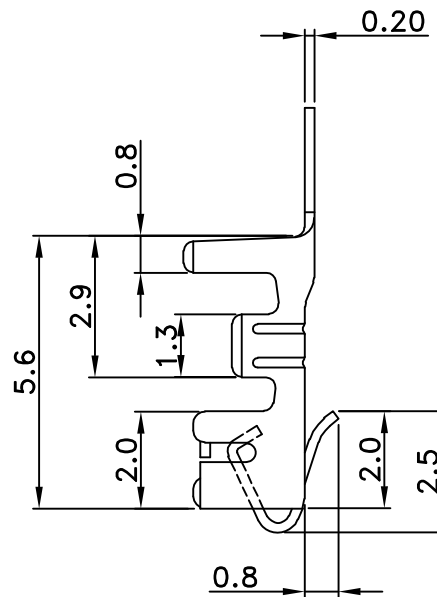
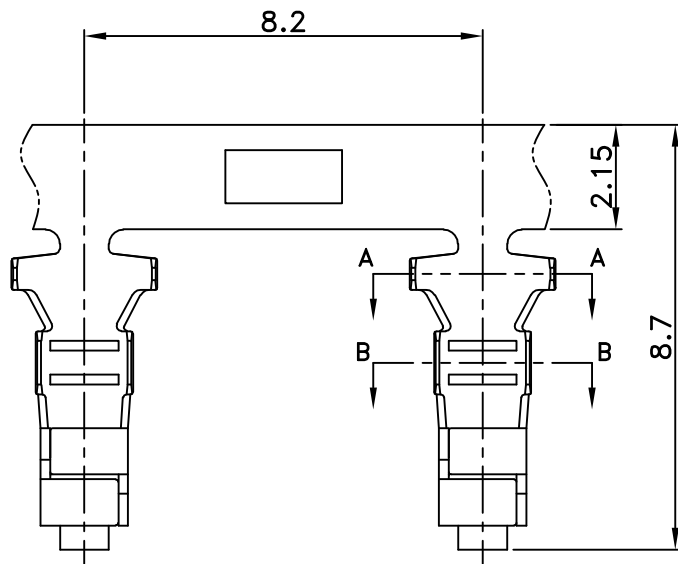
喬訊電子工業股份有限公司

CHYAO SHIUNN
ELECTRONIC INDUSTRIAL LTD.

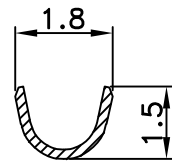
PART NO JS-1001V2-XX HK

2.50mm Board to Board Connector MST TYPE

APPROVED BY	SCALE	UNIT	TOLERANCE	LTR	REVISION RECORD	NAME	DATE	LTR	REVISION RECORD	NAME	DATE
張育瑞		mm	.0 ±0.30	△	修改圖示與實物一致	謝君	22-5-20	△			
CHECKED BY	PROJ	VER NO.	.00 ±0.20	△				△			
劉娜	⊕	a1	.000 ±0.10	△				△			
DRAWN BY	DATE	SIZE	ANGLE	△					CUSTOMER		
謝君	2022/05/20	A4	0° ±1°	△							
			.0° ±	△							
			SHEET 1/1	△							Conforms to The RoHS Instruction



SECTION A-A



SECTION B-B

■ SPECIFICATIONS

- Current Rating : 3A AC/DC
- Rated Voltage : 250V AC/DC
- Withstanding Voltage : 1,000V AC/minute
- Insulation Resistance : 1,000MΩ min
- Temperature Range : - 25°C to + 85°C
- Contact Resistance : 20mΩ max

■ Feature:

- Part No. : JS-20012-TXX
①

- ① T:Standard Plated Process(先鍍后沖)
(Material :Phos. Bronze)
- TB:Standard Plated Process(先鍍后沖)
(Material :Brass)
- TP1:Stamping Befor Plated(先沖后鍍)
(Material :Phos. Bronze)
- TBP:Stamping Befor Plated(先沖后鍍)
(Material :Brass)

- Applicable Wires : AWG# 22 - 28
- Finish : Tin Plated
- Thickness : 0.2mm
- Q' ty : 7,000 pcs./Reel
- Mates With: JS-20012-XXHK Housing



喬訊電子工業股份有限公司
CHYAO SHIUNN
ELECTRONIC INDUSTRIAL LTD.

APPROVED BY	SCALE	UNIT	TOLERANCE	LTR	REVISION RECORD	NAME	DATE	LTR	REVISION RECORD	NAME	DATE
張育瑞		mm	.0 ±0.3	△				△			
CHECKED BY	PROJ	VER NO.	.00 ±0.2	△				△			
劉娜	⊕	α0	.000 ±0.1	△				△			
			ANGLE	△							
			0° ±1°	△						CUSTOMER	
			.0° ±	△							
			SHEET 1/1	△						Conforms to The RoHS Instruction	

PART NO JS-20012-TXX

2.50mm Wire to Board Connector, Terminal